

***Rigby High School***  
**2023-2024 Course Catalog**



***“Every student college or career ready”***

# General Information

**Honor Roll** is a calculation of all grades earned in one specific Trimester.

**Honor Roll** will be calculated after each Trimester is completed, and only represents that 1 Trimester.

Honors 3.40 – 3.69

High Honors 3.70 – 4.0

Seniors who hold a cumulative GPA of **3.4 - 4.0** will be eligible for recognition at Graduation.

Honors is a **3.40 – 3.69** cumulative GPA

High Honors is a **3.70 – 4.0** cumulative GPA

## **Additional Requirements:**

- Student **must** take a college entrance exam: (ACT or SAT); **during their Junior year** to be considered for graduation their Senior year.
- Students must pass their civics test by the end of their senior year.
- Students' must pass their Senior Projects (completed during U.S. Government course)
- Students must complete their Biology or Chemistry end-of-course assessment.

## **Disclaimer:**

Information provided is based on the most updated information that RHS and Jefferson School District had at the time of this publication. 1/2023

The State Department of Education and legislatures are frequently changing the examinations that it requires students to have passed or completed in order to graduate.

*3 or 4 LETTER CAPS WITH NUMBERS FOLLOWING IS A DUAL CREDIT "COLLEGE LEVEL" COURSE (Ex. ENGL 101)  
\*indicates a Dual Credit course that fulfills a GEM requirement for the Associate path. College courses are \$75.00 per the awarded college credit hour. 3 credits @\$75.00 each would be \$225.00*

Advanced Opportunity Funding is determined by the state, the allotted amount for qualifying full time Idaho Students is **\$4,125**. For more information Advanced Opportunities visit their website at <https://nextsteps.idaho.gov/resources/advanced-opportunities-forward-program-for-high-school-students> or you can speak with the College and Career Advisors.

# Table of Contents

<u>GENERAL INFORMATION</u> .....	2
<b>9<sup>TH</sup> GRADE COURSES</b> .....	5
<u>WORKSHEET</u> .....	6
<b>10<sup>TH</sup> GRADE COURSES</b> .....	7
<u>WORKSHEET</u> .....	8
<b>11<sup>TH</sup> GRADE COURSES</b> .....	9
<u>WORK SHEET</u> .....	10
<b>12<sup>TH</sup> GRADE COURSES</b> .....	11
<u>WORK SHEET</u> ....	12
<i>ENGLISH PATHWAY</i> .....	13
<b>ENGLISH</b> .....	14
<i>MATH PATHWAY</i> .....	19
<b>MATH</b> .....	20
<b>SCIENCE</b> .....	21
<b>COMMUNICATIONS</b> .....	31
<b>ECONOMICS</b> .....	33
<b>HEALTH</b> .....	48
<b>SOCIAL STUDIES &amp; HUMANITIES</b> .....	50
<b>U.S. GOVERNMENT</b> .....	54
<b>FOREIGN LANGUAGE</b> .....	45
<b>FINE ARTS/ACTING/MUSIC</b> .....	38
<b>PHYSICAL EDUCATION</b> .....	55
<b>FAMILY CONSUMER SCIENCE</b> .....	35
<b>HEALTH CARE EDUCATION</b> .....	62
<b>BUSINESS MARKETING</b> .....	27
<i>AGRICULTURE PATHWAY</i> .....	67
<b>AGRICULTURE EDUCATION/ Sciences</b> .....	68
<i>TECHNOLOGY EDUCATION PATHWAY</i> .....	71
<b>IMMERSION PROGRAM</b> .....	63
<b>EDUCATION SUPPORTS</b> .....	61

## Table of Contents Continued

<b>EDUCATION TRACK</b> .....	58
<i>AUTOMOTIVE TECHNOLOGY PATHWAY</i> .....	74
<b>AUTOMOTIVE TECHNOLOGY</b> .....	75
<b>MISC COURSES</b> .....	77
<b>NO-CREDIT RELEASE TIME</b> .....	77
CREDITCOVERY	
SENIOR PROJECT/SENIOR PROJECT RUBRIC	
ADVANCED OPPORTUNITIES	
DUAL ENROLLMENT	
ASSOCIATES DEGREE CSI PATHWAY/GEM STAMP CSI PATHWAY	
ASSOCIATES/ GEM STAMP CSI INFORMATION	
CLUBS/ACTIVITIES	
CLASS CHOICE INFORMATION	

## 2023-2024 NEW COURSES!

<b>Ceramics III</b> (2 period class, 2 Elective Credits) Open to Grades 10-12.....	40
<b>Drivers Education</b> (.5 Elective Credit) Open to grades 9-12.....	78
<b>ED204 Families, Communities and Culture</b> (1 Humanities/Elective Credit) Open to Grades 10-12.....	59
<b>ED205 Development/Individual Differences</b> (1 Humanities/Elective Credit) Open to Grades 10-12.....	59
<b>Foundations of Education</b> (1 Humanities/Elective Credit) Open to Grades 10-12.....	59
<b>Introduction to Printmaking</b> (1 Elective Credit) Open to Grades 10-12.....	40
<b>Science Olympiad</b> (formerly STEM)(1 Science Credit) Open to Grades 10-12.....	24
<b>Videography</b> (formerly Broadcasting) (1 Elective Credit) Open to Grades 9-12.....	39
<b>World Mythology</b> (1 Humanities/Elective Credit) Open to Grades 10-12.....	52



## RHS 9<sup>th</sup> Grade Course Requests 2023 – 2024

**Course Descriptions can be found at [www.rigbytrojans.com](http://www.rigbytrojans.com)**  
the course catalog link is located on the main page.

### **English** (English)

English 9 A,B,C  
Adv English 9 A,B,C

### **Math** (Math)

Algebra I A,B,C  
Geometry A,B,C

### **Science** (Science)

Intro to Earth & Space Science  
Introduction to Physics  
Intro to Bio Chemistry

### **Agriculture** (Science/ Elective)

Intro to Ag Edu  
Intro to Livestock  
Intro to Plant Industry  
Intro to Natural Resources  
Intro to Ag Mechanics

### **Debate** (Communications)

Debate

### **Computer Tech** (Multi Media)

Business Computer Apps  
Graphic Design  
Web page Design  
Video Game design  
Video Editing

### **Family Consumer Science**

(Elective)  
Teen Living

### **Career Tech Ed**

(Elective)  
Cabinet Making I  
Intro to Robotics  
Fundamentals of Tech I,II  
Intro to CADD I, II  
Residential Building I

### **Fine Art** (Humanities)

Art I  
Painting I  
Ceramics I  
Videography "Broadcasting"  
#+Yearbook (Multi Media)  
Photography I (Multi Media)

### **Music**

+JV Jazz Band A,B,C  
+Percussion Ensemble  
+Concert Band, A,B,C  
++#Wind Ensemble A,B,C  
+Concert Orchestra A,B,C  
Womans Choir A,B,C  
+Mens Choir A,B,C  
+Handbell Choir A,B,C  
Acoustic Guitar

### **Acting**

+Drama Stagecraft  
Acting I  
+#Improv Comedy

### **Key:**

\* Dual Credit or AP Class  
# Teacher approval, application or audition, tryout  
+ Class can be taken multiple times  
**Bold** classes have prerequisites

### **Social Studies** (Humanities)

Contemporary World Issues  
Maximizing Personal Development  
+#Student Leadership (Stu-Co)  
World History I (World Hist)

### **Foreign Language** (Humanities)

French I A,B  
Spanish I A,B

### **Immersion program Participants**

(Humanities/Elective)  
Chinese Immersion 101 A,B  
Spanish Immersion 101 & 102

### **No Credit Courses**

+Impact Ministries Release Time  
(Non Denominational)  
+Release Time -Seminary A,B

### **Physical Education** (PE)

+Lifetime Sports  
+Personal Fitness  
+Strength & Con  
+# Strength & Con Football  
+ Strength & Con Basketball  
+ Strength & Con Track  
+ Strength & Con Soccer  
+Strength & Con Cross Country  
+#Stren & Con Baseball/Softball  
+Strength & Con Dance

## FRESHMEN (CLASS OF 2027)

2023-24 COURSE REGISTRATION WORKSHEET

Parent Signature: \_\_\_\_\_

Student: \_\_\_\_\_

Student Number: \_\_\_\_\_

***COURSE CATALOG can be found at [www.rigbytrojans.org](http://www.rigbytrojans.org). (Big Maroon Box in the middle of the page)***

### Next Year Course Selections

### Graduation Requirements

	Write Courses Below	SAMPLE SCHEDULE: GUIDE ONLY	Courses	Credits
1		English 9A	English	10
2		English 9B	Math	10
3		English 9C	(Must Include: Algebra I and Geometry)	
4		Math A	Science	9
5		Math B	(Freshmen take: Intro Biochem, Intro Physcis, Intro Earth/Space)	
6		Math C	(Sophomores take: Biology A & B)	
7		Intro to Biochemistry	Communications (speech, debate)	1
8		Intro to Physics	World History	2
9		Intro to Earth and Space Science	US History	2
10		World History I	Economics	1
11		Multimedia	US Government	2
12		Physical Education	Multimedia (see list course catalog)	1
13		Humanity or Foreign Language A	Health	1
14		Humanity or Foreign Language B	Physical Education	2
15		Elective	Humanities (see list course catalog)	2
16		Elective	Electives	17
17		Elective	Total Credits	60
18		Elective	NON Credit courses can be added in the electives as well.	
1		Alternate 1	Example: Release Time A and B or Impact Ministries	
2		Alternate 2	Any two hour long course must be entered on two lines.	
3		Alternate 3	Follow Course Catalog plan if getting Associates or Gem Stamp.	



# RHS 10<sup>th</sup> Grade Course Requests 2023-2024

The RHS Course catalog can be found at [www.rigbytrojans.org](http://www.rigbytrojans.org) the course catalog link is located on the main page.

Key:

\* Dual Credit

# Requires teacher approval, application or audition

+ Class can be taken multiple times

**BOLD classes have prerequisites**

## English (English)

English 10 A,B,C

**Honors Eng 10 A,B,C**

+Journalism (Ele)

## Science (Science)

Biology A,B

**AP Biology**

**\*BIOL 100 A,B,C**

**Chemistry A,B**

**\*Chemistry 100L**

SCI Olympiad (Adv.Stem)

Food Science

Environmental Science

(See Ag for additional)

## Math (Math)

Geometry A,B,C

Algebra 1 A,B,C

**Algebra11A,B,C**

**Algebra11, A/B ,B/C**

**Pre Calculus**

**Trigonometry**

**Math144 College Trig**

## Communications (Speech)

Speech

Debate

**Competitive Debate**

**\*COMM 101**

## Computer/Business

(Multi Media, Elective)

Intro to Computer Programing

Gaining Employable Skills

Business Computer Apps

**\*BUSA 215 Computer Apps**

Publishing Graphic Design **Adv**

**Graphic Design**

Web page Design

Video Game Design

Video Editing

Business Owner/Entrepreneurship

**\*BUSA 101 intro to Business**

Business Administration Stock

Market Strategies

**\*FINA 102 Personal Finance**

Business law

Sports/ Entertainment & Marketing

Accounting I

Career Exploration

## Agriculture Classes CTE

(Elective & Science)

Intro to Ag Education (elective)

Intro to Livestock (ele)

Intro to Plant Industry (ele)

Intro to Natural Resources (ele)

Intro Ag Mechanics (ele)

Environmental Science (sci)

Botany horticulture (sci)

Botany plant science (sci)

Botany range science (sci)

Zoology Nutrition (sci)

Zoology Reproduction (sci)

+ Ag Personal Skill Development (Speech)

**Applied Livestock Management**

**Ag Systems Electricity/Hydraulics (ele)**

**\*WELD 107 Ag Welding (ele)**

**\*WELD151 Adv Ag Welding (ele)**

**\*WELD149/154 Ag Fabrication 2 tri's**

## Automotive Tech CTE (Elective)

**\*ASE 164 Auto I, Electrical**

Auto I, Maintenance

**\*ASE 114 Auto II, Engine Repair**

**Auto II, Brakes, Steering, Suspension**

**\*ASE 133 Auto II, Transmission &**

**Drive-Train**

## Career TechEducation CTE

Fundamentals of Tech I, II

Intro to Robotics A,B

Intro to CADD 1, II

Cabinet Making I, II Residential

Building I, II

**Healthcare Education**

(Elective)

**\*Fundamentals of Health**

**\*Professions Medical Terminology**

## Music/Acting Edu

(Humanities)

**#+V & Jr.V Jazz Band A, B, C**

Percussion Ensemble A,B, C

Concert Band, A, B, C

**#+Wind Ensemble A, B, C**

Concert Orchestra A, B, C

**+#Chamber Orchestra A, B, C**

Womans Choir A, B, C

+Mens Choir A, B, C

+Jazz Choir A, B, C

**#+Troylairs**

**#+Chamber Singers A,B,C**

Acoustic Guitar

Handbell Choir A, B, C

**#Advanced Hand Bell A,B,C**

Improv Comedy A, B, C

+Drama Stagecraft

**+Acting 1,11**

**\*MUSI 100 intro to music**

**Musical Theatre**

**#+ Troyplayers A,B,C**

**\*THEAT 101 Survey**

## Fine Arts (Humanities)

Art I, II

**Painting I, II**

Ceramics I,

**Ceramics II (2 hr class)**

**Ceramics III (2 hr class)**

Photography I, II

**#Yearbook**

Videography (Broadcasting)

**NEW** Intro to Printmaking

## Family/Consumer Sciences

(Elective)

Child & Parent Development

**Early Childhood Education A,B**

Fashion & Textiles I,II Interior

Design

Nutrition and Foods

Food Science (SCI)

## Health (Health)

Health

**\*HLT255 Health and Wellness**

## Physical Education (PE)

+Lifetime Sports

+Personal Fitness

+Strength & Con

+Strength & Con Teams

(see course catalog for complete ST & Con listing)

**\*EXHA104 Stay Active Live Well**

## Education Track (Elective)

Peer Tutoring I,II,III

**\*ED201 Foundations of**

**\*ED202 Foundations of**

**NEW** **\*ED204 Family, community, culture**

**NEW** **\*ED205 Development/individual differences**

## Foreign Language

(Humanities)

French I, II,III A,B

Spanish I, II, III A,B

**\*SPAN 101 Elem Spanish**

**\*SPAN 102 Elem Spanish**

## Social Studies (Humanities)

Contemporary World Issues

**\*PSYCH 140**

**NEW** World Mythology

Intro to Philosophy

## World History (World Hist)

World History II

## No Credit Classes

Release Time Seminary A,B (LDS)

Impact Ministry A,B

(Non- Denominational) Release time

# SOPHOMORE (CLASS OF 2026)

2023-24 COURSE REGISTRATION WORKSHEET

Parent Signature: \_\_\_\_\_

Student: \_\_\_\_\_ Student Number: \_\_\_\_\_

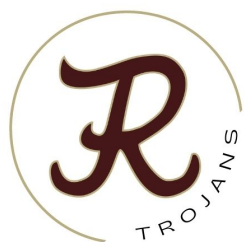
**COURSE CATALOG can be found at [www.rigbytrojans.org](http://www.rigbytrojans.org). (Big Maroon Box in the middle of the page)**

## Next Year Course Selections

## Graduation Requirements

	Write Courses Below	SAMPLE SCHEDULE: GUIDE ONLY	Courses	Credits
1		English 10A	English	10
2		English 10B	Math	10
3		English 10C	(Must Include: Algebra I and Geometry)	
4		Math A	Science	9
5		Math B	(Freshmen take: Intro Biochem, Intro Physics, Intro Earth/Space)	
6		Math C	(Sophomores take: Biology A & B)	
7		Biology A	Communications (speech, debate)	1
8		Biology B	World History	2
9		World History II	US History	2
10		Health	Economics	1
11		Physical Education	US Government	2
12		Elective or Required not done	Multimedia (see list course catalog)	1
13		Elective or Required not done	Health	1
14		Elective or Required not done	Physical Education	2
15		Elective	Humanities (see list course catalog)	2
16		Elective	Electives	17
17		Elective	Total Credits	60
18		Elective	NON Credit courses can be added in the electives as well.	
1		Alternate 1	Example: Release Time A and B or Impact Ministries	
2		Alternate 2	Any two hour long course must be entered on two lines.	
3		Alternate 3	Follow Course Catalog plan if getting Associates or Gem Stamp.	





# RHS 11<sup>th</sup> Grade Course Requests 2023-2024

Course Descriptions can be found at [www.rigbytrojans.org](http://www.rigbytrojans.org)  
the course catalog link is located on the main page.

Key:

- \* Dual Credit (not all Dual classes shown)
- # Requires teacher approval, application or audition
- + Class can be taken multiple times
- Bold classes have prerequisites**

## English (English)

English 11 A,B  
AP English A,B  
Creative Writing (Ele)  
+Journalism (Ele)

## Science (Science)

Forensic Science I, II  
Genetics  
\*AP Biology A,B,C  
Anatomy & Phys A,B  
\*HPPS 2243 ANAT & PHYS  
\*BIO100/BIOL100  
Enviro Science  
Chemistry A,B  
\*CHEM100/100L  
+Science Olympiad  
Physics A,B  
\*PHYS100/100L  
Intro to Astronomy  
Geology  
\*GEOL101 Physical Geology  
Food Science & Nutrition  
(See Ag Courses)

## Math (Math)

Algebra 11 A/B, B/C  
Algebra 11 A,B,C  
Applied Math A,B,C  
Trigonometry  
Pre-Calculus  
Statistics  
\*Automotive Math A,B  
#Financial Literacy A,B  
Calculus A,B

**NEW** \*MATH123  
\*MATH143 College Algebra  
\*MATH144 Trig  
\*MATH1170 Calc  
\*MATH1153 Stats

## Social Studies (Hum)

Contemporary World Issues  
Holocaust  
Intro to Philosophy  
World Mythology  
#Student Council  
\*PSYCH 140 Gen Psychology

## US History (US History)

US History A,B  
\*HIST 111 (Elective)  
\*HIST 112 (Elective)

## Fine Art (Elective)

Art I, II, III  
Painting I,II  
Ceramics I, II,III (2 Hr Class)  
Photography I, II  
#Yearbook  
Videoography (Broadcasting)  
**NEW** Intro to Printmaking

## Ag Career Technology Edu "CTE"

Applied Livestock Management  
Applied Greenhouse Nursery  
Ag Personal Skill Development  
Botany Horticulture/Plant (Sci)  
Botany range Science (Sci)  
Botany Plant (Sci)  
Zoology Animal Nutrition (Sci)  
Zoology Animal Reproduction (Sci)  
Zoology Fish & Wildlife (Sci)  
Veterinary Science I (small animal care)  
Veterinary Science II (Sci)  
Environmental Science (Sci)  
Intro to Ag Mechanics (Ele)  
Ag Fabrication (2 Tris) (Ele)  
Ag Systems Electricity/Hydraulics (Ele)  
\*WELD107 Ag Welding (Ele)  
\*WELD 151 Adv Weld Ag Systems (Ele)  
\*WELD 149/154 Ag Fabrication  
\*AGED258 Experiential Learning & Career

## Career Tech Edu CTE (Elective)

Fund of Technology I, II  
Intro to Robotics A,B  
Intro to CADD I, II,  
Cabinet Making I, II  
Residential Building I, II, III

## Family Consumer Science (Elective)

Child/Parent Development  
Early Childhood Professions A,B  
Fashion & Textiles I,II  
Interior Design  
Nutrition and Foods  
Intro to Culinary Arts  
Culinary Arts (2 hr class)

## Automotive Edu

\*Ase165Auto1, Electrical  
\*ASE 165 Auto 1, Maintenance  
\*ASE 114Auto 11, Engine Repair  
Auto 11, Breaks, Steering, Suspension  
\*ASE 133 Auto 11, Transmission, Drive-trains  
\*Auto III, Engine Performance  
\*ASE173 Auto III, Air conditioning, Adv Performance  
\*Auto III Lab, Diagnostics & Repair

## Computer/Business

(Multi Media/Elective)  
Accounting I, II  
Gaining Employable Skills  
Business Computer Apps  
\*BUSA 215 Computer Apps  
Publishing Graphic Design  
Adv Publishing Graphic Design  
Web page Design  
Video Game Design  
Video Editing  
Intro to Computer Programing  
Business Administration  
Business Ownership/Entrepreneurship  
\*BUSA 101 Intro to Business  
Business Law & Ethics  
Sports/Entertainment Marketing  
Career Exploration/Employment Prep  
Stock Market Strategies  
\*FINA 102 Personal Finance

## Communications (Speech)

Speech  
Debate  
#Competitive Debate  
\*COMM 101  
Ag Personal Skill Development

## Music/Acting Education

+#V & Jr.V Jazz Band A, B, C  
+Percussion Ensemble A,B,C  
+#Concert Band, A, B, C  
+#Wind Ensemble A, B, C  
+#Concert Orchestra A, B, C  
+Symphonic Orchestra A, B, C  
+Womans Choir A, B, C  
+Mens Choir A, B, C  
+#Jazz Choir A, B, C  
Acoustic Guitar  
+#Troylairs A,B,C  
+#Chamber Singers A,B,C  
+#Advanced Handbell Choir A, B, C  
+Drama Stagecraft  
+Acting I, II,III  
+Improv Comedy Troupe A,B,C  
+#Troyplayers A,B,C  
+Musical Theatre  
\*MUSI 100 Intro to Music  
\*THEAT 101 Survey

## Health

Health  
\*HLTH 255 Health & Wellness  
\*EXHA 104 Stay Active Live Well

## Foreign Language (Humanities)

French I A,B  
French 11 A,B  
French III A,B  
Spanish I A,B  
Spanish II A,B  
Spanish III A,B  
\*SPAN101 Elem Spanish  
\*SPAN102  
\*SPAN2210  
\*SPAN2211  
\*Spanish for Health Care 1,11

## Immersion Program(Humanities)

Spanish 102/SPAN102  
Spanish 201/SPAN201  
Chinese 101 A,B

## Physical Edu (PE)

+Personal Fitness  
Lifetime Sports  
+Strength & Con Girls/Boys I, II  
+Strength & Con Football  
+Strength & Con Track  
+Strength & Con Basketball  
+Strength & Con Soccer  
+Strength & Con Cross Country  
#+Strength & Con Dance  
#+ Strength & Con Softb/Baseball

## Healthcare Education (Elective)

\*Fundamentals of Health Professions  
\*Medical Terminology  
HCT140 CNA Nursing Assistant  
(2 periods)

## Teacher Professions Edu (Elective)

Tutoring Practicum  
\*EDUC201 Foundations of Ed  
\*EDUC202 Field Experience  
**NEW** \*EDUC204 Families, Community  
**NEW** \*EDUC205 Dev, Individual Differ  
**NEW** \*EDUC215 Ed Technology

## No Credit Classes

Release Time Seminary A,B (LDS)  
Impact Ministry A,B  
(Non-Denominational Release Time)  
School Release "Work Release"

# JUNIORS (CLASS OF 2025)

2023-24 COURSE REGISTRATION WORKSHEET

Parent Signature: \_\_\_\_\_

Student: \_\_\_\_\_

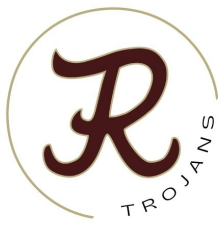
Student Number: \_\_\_\_\_

**COURSE CATALOG can be found at [www.rigbytrojans.org](http://www.rigbytrojans.org). (Big Maroon Box in the middle of the page)**

## Next Year Course Selections

## Graduation Requirements

	Write Courses Below	SAMPLE SCHEDULE: GUIDE ONLY	Courses	Credits
1		English 11A	English	10
2		English 11B	Math	10
3		Math A	(Must Include: Algebra I and Geometry)	
4		Math B	Science	7
5		Math C	(Must Include: Physical Science and Biology)	
6		Science	Communications (speech, debate)	1
7		Science	World History	2
8		US History A	US History	2
9		US History B	Economics	1
10		Elective or Required not done	US Government	2
11		Elective or Required not done	Multimedia (see list course catalog)	1
12		Elective or Required not done	Health	1
13		Elective	Physical Education	2
14		Elective	Humanities (see list course catalog)	2
15		Elective	Electives	19
16		Elective	Total Credits	60
17		Elective	NON Credit courses can be added in the electives as well. Example: Release Time A and B or Impact Ministries Any two hour long course must be entered on two lines. Follow Course Catalog plan if getting Associates or Gem Stamp.	
18		Elective		
1		Alternate 1		
2		Alternate 2		
3		Alternate 3		



# RHS 12<sup>th</sup> Grade Course Requests 2023-2024

Course Catalog with descriptions can be found at [www.rigbytrojans.org](http://www.rigbytrojans.org) the course catalog link is located on the main page. Courses listed represent a typical Senior course load.

## Key:

\*Dual Credit (not all Dual classes may be shown)

# Requires teacher approval, application or audition

+ Class can be taken multiple times

**Bold classes have prerequisites**

## Foreign Language (Humanities)

French I A,B

French II A,B

French III A,B

Spanish I A,B

Spanish II A,B

Spanish III A,B

\*SPAN101 Elem Span

\*SPAN102 Elem Span

\*SPAN2210 Spanish for Health Care I

\*SPAN2211 Spanish for Health Care II

## Healthcare Education (Etc)

\*Fundamentals of Health

\*Professions Medical Terminology

\*HCT140 CNA Nursing Assistant

## Teacher Professions Edu (Ele)

NEW \*EDUC201 Foundations of Ed

NEW \*EDUC202 Field Experience

NEW \*EDUC204 Families Community

NEW \*EDUC205 Dev, Individual Differ

NEW \*EDUC215 Ed Technology

NEW \*EDUC 290 Exit Seminar

\*GEN-ED 101

+Tutoring Practicum

#+`Teacher Aide

#+`Library Aide

#+`Office/Counseling Aide

`(Add to schedule in Class Choice during class change window in the late summer before school starts.)

## Physical Edu (PE)

+Lifetime Sports

+Personal Fitness

+Strength & Con Girls/Boys

+Strength & Con Football

+Strength & Con Basketball

+Strength & Con Track

+Strength & Con Soccer

#+Strength & Con Cross Country

#+Strength & Con Dance

+Strength & Con Soft b/ Base ball

## No Credit Courses

Release Time "Seminary" A,B (LDS)

Impact Ministry A,B (Non-Denominational Release Time)

School Release "Work Release"

## Fine Art (Elective)

Art I, II, III

Painting I, II

Ceramics I, II, III (2 Hr Class)

NEW Intro to Printmaking

Photography I, II

#+Yearbook

+Videography (Broadcasting)

## Agriculture Career Technology

### Education "CTE"

Applied Livestock Management

Applied Greenhouse Nursery

Ag Personal Skill Development

Botany Horticulture/Plant (Sci)

Botany Plant (Sci)

Botany range Science (Sci)

Zoology Animal Nutrition (Sci)

Zoology Animal Reproduction (Sci)

Zoology Fish & Wildlife (Sci)

Vet Sci I (Small Animal Care) (Sci)

Veterinary Science II (Sci)

Environmental Science (Sci)

Ag Fabrication (2 Tris) (Ele)

Ag Systems Electricity/Hydraulics(Ele)

\*WELD 170 Ag Welding (Ele)

\*WELD 151Adv Welding Ag Systems (Ele)

\*WELD 149/154 Ag Fabrication (Ele)

\*AGED258 Experiential Learning & Career Development

## Career Technology CTE (Ele, MM)

Fund of Technology I, II

Intro to Robotics A, B

Intro to CADD I, II

Cabinet Making I, II

Residential Building II, III

## Automotive Tech (Ele)

\*ASE 114 Auto 11, Engine Repair

Auto 11, Breaks, Steering, Suspension

\*ASE 133 Auto 11, Transmission,

Drive-trains

\*Auto III, Engine Performance

\*ASE173 Auto III, Air conditioning, Adv

Performance

\*Auto III Lab, Diagnostics & Repair

## Family Consumer Science

(Elective)

Child/Parent Development

Early Childhood Professions A,B

Fashion & Textiles I, II

Interior Design

Nutrition and Foods

Intro to Culinary Arts

Culinary Arts (2 hr class)

## Health (Health)

Health

\*HLTH 255 Health & Wellness

\*EXHA 104 Stay Active Live Well

## Computer Tech /Business

(Multi Media)

Accounting I, II

Gaining Employable Skills

Business Computer Apps

\*BUSA215 Computer Apps

Business Ownership/Entrepreneurship

\*BUSA101 Intro to Business

Publishing Graphic Design

Adv Publishing Graphic Design

\*Web page Design

Video Game Design

Video Editing

Intro to Computer Programing

Business Administration

Business Law & Ethics

Stock Market

\*FINA102 Personal Finance Sports/

Entertainment Marketing Career

Exploration/Employment Prep

## Communications (Speech)

Speech

Debate

#Competitive Debate

\*COMM 101

Ag Personal Skill Development

## Economics (Econ)

Economics

Business Economics

Ag Business Economics

## Music/Acting Edu (Ele/Hum)

+Percussion Ensemble A, B, C

+#V Jazz Band A, B, C

+#Concert Band, A, B, C

+#Wind Ensemble A, B, C

+#Concert Orchestra A, B, C

+Symphonic Orchestra A, B, C

+Womans Choir A, B, C

+Mens Choir A, B, C

+#Jazz Choir A, B, C

Acoustic Guitar

+#Trojans A,B,C

+#Chamber Singers A,B,C

+#Advanced Handbell Choir A, B, C

+Drama Stagecraft

+Acting I, II

+Improv Comedy Troupe A, B, C

#Troyplayers A,B,C

\*Musical Theatre

\*MUSI 100 Intro to Music

\*THEAT 101 Survey

## English (English)

English 12 A,B

\*ENG 101

\*ENG 102

\*ENG 1175

+Journalism (Ele)

Creative Writing (Ele)

## Math (Math)

Financial Algebra A,B

Financial Literacy A,B

NEW Applied Math

Trigonometry

Statistics

Pre-Calculus

Calculus A,B, C

Automotive Math

\*MATH143 College Alg

\*MATH144 Trig

\*MATH170 Calc A,B,C

\*MATH1153 Stats

NEW \*MATH123 Applied Math

## Science (Science)

Forensic Science I, II

Food Science

Genetics

Science Olympiad

Intro to Astronomy

Geology

\*AP Biology A,B,C

Anatomy & Physiology A,B

\*HPPS2243 ANAT & PHYS

\*BIO100 BIOL Concepts

\*BIO102/BIOL102L

Chemistry A,B

\*CHEM100/100L

Physics A,B

\*PHYS100/100L

\*GEOL 101 Phys Geology

(Add'l Sci see Ag courses)

## Social Studies

Intro to Philosophy

Contemporary World Issues

Holocaust

NEW World Mythology

\*PSYCH 140

## US History

\*HIST 111 (Elective)

\*HIST 112 (Elective)

## US Government (US Gov)

US Government A,B

\*POLS 101 American Gov

+#Student Council (Ele)



# SENIORS (CLASS OF 2024)

2023-24 COURSE REGISTRATION WORKSHEET

Parent Signature: \_\_\_\_\_

Student: \_\_\_\_\_

Student Number: \_\_\_\_\_

**COURSE CATALOG can be found at [www.rigbytrojans.org](http://www.rigbytrojans.org). (Big Maroon Box in the middle of the page)**

## Next Year Course Selections

## Graduation Requirements

	Write Courses Below	SAMPLE SCHEDULE: GUIDE ONLY	Courses	Credits
1		English 12A	English	10
2		English 12B	Math	10
3		Math A	Science (Must Include: Algebra I & Geometry)	7
4		Math B		
5		Science	Communications (speech, debate)	1
6		Science		
7		US Government A	World History	2
8		US Government A	US History	2
9		Economics	Economics	1
10		Elective or Required not done	US Government	2
11		Elective or Required not done	Multimedia (see list course catalog)	1
12		Elective or Required not done	Health	1
13		Elective	Physical Education	2
14		Elective	Humanities (see list course catalog)	2
15		Elective	Electives	19
16		Elective	Total Credits	60
17		Elective	Also complete Senior Project, Civics Test, College Test	
18		Elective	NON Credit courses can be added in the electives as well.	
1		Alternate 1	Any two hour long course must be entered on two lines.	
2		Alternate 2	Follow Course Catalog plan if getting Associates or Gem Stamp.	
3		Alternate 3	Teachers Aides and off campus call only be added in the fall.	

## ENGLISH PATHWAY

Standard Graduation Track			
Freshman	English 9A	English 9B	English 9C
Sophomore	English 10A	English 10B	English 10C
Junior	English 11A	English 11B	
Senior	English 12A	English 12B	

Advanced Track			
Freshman	English 9A Advanced	English 9B Advanced	English 9C Advanced
Sophomore	English 10A Advanced	English 10B Advanced	English 10C Advanced
Junior	AP English A	AP English B	English 101 (Optional only during 3 <sup>rd</sup> tri)
Senior	English 101	English 102	English 175

Associates Track			
Freshman	English 9A Advanced	English 9B Advanced	English 9C Advanced
Sophomore	English 10A Advanced	English 10B Advanced	English 10C Advanced
Junior	AP English A	AP English B or English 101	
Senior	English 101	English 102	English 175

To take English 102, students must have taken English 101 or have passed their AP test with a 3 or higher. Students may take English 1175 at any time during their senior year.

# ENGLISH LITERATURE & COMPOSITION

## English - 9 A, B, C - Open to 9, 10, 11, 12 -

Requirement filled: English  
Prerequisite: None  
Content: Approach to the basics in language arts, writing and world literature.

## Advanced English 9 A, B, C – Open to 9

Requirement filled: English  
Prerequisite: None  
Content: An accelerated curriculum along with Pre-AP strategies for college-bound students. Advanced writing processes and analytic practices necessary to be successful in AP English language or any other English class.

## English 10 A,B,C – Open to 10, 11, 12 -

Requirement filled: English  
Prerequisite: English 9  
Content: An integrated approach to the basics in language arts, writing and world literature.

## Advanced English 10 A,B,C – Open to 10

Requirement filled: English  
Prerequisite: English 9  
Content: Designed for sophomores on the college prep track. Read non-fiction, classic fiction, drama and poetry to develop rhetorical analysis and close reading skills as well as analytic practices necessary to be successful in AP and dual enrollment courses.

## English 11 A, B,C – Open to 11, 12

Requirement filled: English  
Prerequisite: English 9,10  
Content: Integrated approach to writing, language arts, and American literature.

## AP English Language and Composition A, B, C – Open to 11

Requirement filled: English  
Prerequisite: 3.0 GPA English 9 & 10  
Fee: Exam covered by Advanced Opportunities Scholarship when student requests funding.  
Content: Classical rhetorical strategies, analysis, and the modes of writing with emphasis on persuasive writing. Read a variety of non-fiction literary works, write in multiple modes, and become proficient at analysis. College-level workload. Prepare and take the English Language and Composition Exam for the chance to earn college credit.

## English 12 A, B – Open to 12

Requirement filled: English  
Prerequisite: English 9, 10, 11  
Content: Integrated approach to the basics in language arts, writing and British literature.

# Dual Credit English

## **\*ENGL 101: English Composition – Open to 11, 12 – 3 CSI Credits**

Requirement filled:	English 11B or 12 depending when taken
Associates	Written Communication
Requirement:	Teacher Recommendation, as well as overall GPA of 2.5 and 18 on ACT English, or 26 SAT
Prerequisite:	Writing or 55 PSAT Read/Writing. Juniors AP English A with an 80%. If taking ENGL 101 as a junior, it can only take this class in their 3rd trimester.
Fee:	May be covered by Advanced Opportunities when student requests funding.
Content:	Course is designed to instruct student about the writing approach. Readings required for the class are designed to allow students the opportunity to analyze material in a reading journal.

## **\*ENGL 102: English Composition 2 – Open to 12 – 3 CSI Credits**

Requirement filled:	English 12
Associates Requirement:	Written Communication
Prerequisite:	Overall GPA of 3.0, ENGL 101 80% or a score of 3+ on the APLang test, 32 SAT Writing, 25 ACT-Eng
Fee:	May be covered by Advanced Opportunities when student requests funding.
Content:	Course is designed to instruct students about research-based writing. Readings for the course allow students to analyze material for validity and rhetoric. Students will write a variety of research-based essays ranging from informative to persuasive.

## **\*ENGL 1175: Introduction to Literature – Open to 12 – 3 CSI Credits**

Requirement filled:	English 12
Associates Requirement:	Humanistic & Artistic Ways of Knowing (listed as ENGL 175)
Prerequisite:	3.0 GPA or teacher approval, and completion of ENG 101/1101 or 570 SAT, 25 ACT
Fee:	May be covered by Advanced Opportunities when student requests funding.
Content:	Analyze a novel, poem, short story, play or prose piece – using literary elements. Also includes conventions, themes, and historical and literary contexts distinctive to the genre at hand to support meaningful interpretations. Requirements include reading done in class as well as outside of class, analytical essays, poetry writing, quizzes, and exams, and presentations through a variety of media.

# ENGLISH ELECTIVES

## Creative Writing -Open to 10,11,12

Requirement filled: Humanities/ Elective

Prerequisite: English 9, with a 80% or better

Content: This elective course will focus on the craft of creative writing through daily writing activities and writing poetry, short stories, and personal non-fiction. Students will increase their vocabulary, practice constructive critique, read various authors, and create a portfolio of their work.

## Journalism -Open to 10,11,12

Requirement filled: Elective

Prerequisite: English 9, A & B

Fee: None, except for travel expenses involved in OPTIONAL state and national competitions

Content: This is a student-run production class that generates and publishes the award winning Trojanier, a monthly newspaper built with desktop publishing software. Students choose stories, write, take photos, design pages for publication and solicit and produce ads under the direction of the Student Editorial Board and the advisor. Meeting deadlines is vital to achieving a good grade.



# MATH PATHWAY

**MATH**

# MATHEMATICS

## Algebra I A, B, C – Open to 9, 10, 11

Requirement filled: Math

Prerequisite: None

Content: Apply basic mathematical principles to higher-order skills such as graphing linear functions, solving multi-step equations, factoring quadratic expressions, and performing computations on radical expressions.

## Geometry A, B, C – Open to 9, 10, 11, 12

Requirement filled: Math

Prerequisite: Algebra I

Content: Study logical proofs, parallelism, perpendicularity, congruence, polygons, areas and volumes.

## Algebra II A, B, C – Open to 10, 11, 12

Requirement filled: Math

Prerequisite: Algebra I and Geometry completed

Content: Second-year algebra concepts and expansion of Algebra I concepts and skills.

## Honors Algebra II/Trigonometry A, B, C,

Requirement filled: Math

Prerequisite: Algebra I and Geometry completed with a B+ or better / Teacher recommendation

Content: Second-year algebra concepts and expansion of Algebra I concepts and skills in a condensed version for faster learning to move forward in your math placement.

## Statistics – Open to 11, 12

Requirement filled: Math

Prerequisite: Algebra II or Honors Algebra II / Trig with a C

Content: Data collection, organization, and analysis through graphs, charts, tables and surveys.

## Trigonometry – Open to 10, 11, 12

Requirement filled: Math

Prerequisite: Algebra I, Geometry, Algebra IIA or Honors Algebra IIA with concurrent enrollment in

Content: Algebra IIB or Honors Algebra IIB.

Trigonometric ratios defined geometrically and algebraically through circular functions.

# MATH CONTINUED

## Pre-Calculus – Open to 10, 11, 12

Requirement filled: Math  
Prerequisite: Algebra I, Geometry, and Algebra II/ Trig with C.  
Content: 3rd-year concepts and expansion of algebra, including in-depth study of functions.

**NEW**

## Applied Math A,B,C– Open to 11, 12

Requirement filled: Math  
Prerequisite: Algebra I, Geometry.  
Content: Applied Math is intended to strengthen and equip students with technical problem solving and critical thinking skills. This course prepares students to take the State assessment and includes applications to both agricultural and CTE fields.

## Calculus A, B – Open to 11, 12

Requirement filled: Math  
Prerequisite: Pre-Calculus, and Trigonometry with a C  
Content: The basics of 1<sup>st</sup> year calculus, including limits, differentiation and integration.

## Financial Algebra A, B – Open to 12

Requirement filled: Math  
Prerequisite: Geometry, preferred completion of Algebra II  
Content: Understanding and using effective algebra concepts for money management, making responsible consumer choices, credit and debts, saving and investments, employment and income issues, and understanding taxation.

## Financial Literacy A, B - Open to 12

Requirement filled: Math  
Prerequisite : Algebra and Geometry  
Content: The course will teach students to search and assess college and career opportunities, identify and prioritize their personal money management goals, develop personal spending and savings plans, comprehend the impact of time on the value of money, understand the cost of using credit, and protect assets.

## Automotive Applied Mathematics A, B – Open to 11, 12 (Zero Hour)

Requirement filled: Math  
Prerequisite: Algebra I and Geometry, does not have to be an automotive student  
Content: Utilizes algebra and geometry topics in real world automotive and engineering application. Covers Engine Displacement, Compression ratios, piston speed, Horsepower, Air Induction, Volumetric efficiency, Head and Camshaft Design Math, Aerodynamics, Instantaneous MPG and efficiency, graphing torque curves, and using excel to analyze data and statistics.

# DUAL CREDIT MATH

NEW

## **\* MATH 123: Math in a Modern Society Open to 11, 12 – 3 CSI Credits**

Requirement filled: Math

Associates Requirement:

Prerequisite: Algebra II, Algebra II Honors, Applied Math

Fee: May be covered by Advanced Opportunities when student requests funding

Content: This survey course provides an opportunity to acquire an appreciation of the nature of mathematics and its relation to other aspects of our culture. The course is rigorous but not rigid and applies mathematics to real-world problems.

## **\* MATH 143: College Algebra A, B – Open to 11, 12 – 3 CSI Credits**

Requirement filled: Math

Associates Requirement: GEM 3: Mathematical Ways of Knowing

Prerequisite: Algebra II/ Adv Alg II with a B- or better 2.5 GPA, or teacher approval.

Fee: May be covered by Advanced Opportunities when student requests funding.

Content: This course meets the general education requirements for math for those students who will not take more math classes in college. Provides students with the understanding and problem-solving abilities necessary for everyday life. Develops an understanding of math as a language which permits the student to express, define, and answer questions about the world.

## **\* MATH 144: Trigonometry – Open to 11, 12 – 2 CSI Credits**

Requirement filled: Math

Associates Requirement: Elective

Prerequisite: Algebra II/ Adv Algebra II with a B- or better, 2.5 GPA, or teacher approval.

Fee: May be covered by Advanced Opportunities when student requests funding.

Content: Fundamental concepts of trigonometry, graphs, identities, conditional equations, right and non-right triangle applications, inverse functions, complex numbers including DeMoivre's Theorem, polar coordinates equations, conic sections and parametric equations.

## **\* MATH 1170: Calculus A, B, C – Open to 11, 12 – 4 ISU Credits**

Requirement filled: Math

Associates Requirement: Mathematical Ways of Knowing

Prerequisite: Pre-Calculus, Trigonometry, Math 143, 144 with a C, overall 2.5 GPA and one of the following test scores 29 ACT in math, 680 SAT in math, 76 ALEKS.

Fee: May be covered by Advanced Opportunities when student requests funding

Content: Basics of 1<sup>st</sup> year Calculus, including limits, differentiation and integration.

## **\* MATH 1153: Statistics A, B – Open to 11, 12 – 3 ISU Credits**

Requirement filled: Math

Associates Requirement: Mathematical Ways of Knowing

Prerequisite: Algebra II/ Adv Algebra II/ Trig with a C,

Fee: May be covered by Advanced Opportunities when student requests funding.

Content: Data collection, organization, and analysis through graphs, charts, tables, and surveys. Descriptive statistics, probability, confidence intervals, and hypothesis testing for one and two parameters. Emphasis on applications to a wide variety of disciplines.



# SCIENCE

## **Intro to Bio Chem- Open to 9th**

Requirement filled: Science  
Prerequisite: None  
Content: Students will explore the nature and chemistry of life by solving real world problems and phenomena. Students will answer biological questions such as what is life? What might it take for life to exist here on earth? How does life compare at microscopic or macroscopic scales?

## **Introduction to Physics Open to 9th**

Requirement filled: Science  
Prerequisite: None  
Content: The study of motion and how it applies to forces, the conservation of energy, and the interactions between electricity and magnetism.

## **Intro to Earth & Space Science- Open to 9th**

Requirement filled: Science  
Prerequisite: None  
Content: The study of space, geologic structures and forces, the waters on our planet, and the atmospheric forces that shape our world. Students will explore the Earth's spheres including the geosphere, hydrosphere, atmosphere, and the water cycle of the Earth. Students will learn about scientific inquiry, geologic time, space exploration, the solar system, and the universe.

## **Science Olympiad (formerly Adv. STEM) Open to 10,11, 12**

Requirement filled: Science  
Prerequisite: None  
Content: This course is designed to prepare students for the upcoming Science Olympiad Season. Students will compete as a team in various science disciplines of biology, earth science, chemistry, physics and technology.

## **Biology A, B – Open to 10, 11, 12**

Requirement filled: Science  
Prerequisite: Successful completion of 9th grade Science Courses  
Content: Students will investigate the nature of life. Biology A will focus on cellular energy and an exploration of genetics. Biology B focuses on DNA and changes to the genetic code.

## **Chemistry A, B – Open to 10, 11, 12**

Requirement filled: Science  
Prerequisite: Must pass Chem A with a C or better  
Content: Study of atomic structure, basic chemical relationships. Highly recommended for students interested in careers in science, medicine, or engineering.

## **Food Science and Nutrition – Open to 10, 11, 12**

Requirement filled: Science  
Prerequisite: None  
Content: Helps students understand specific facts and principles of food science, safety and nutritional components of food.

# **SCIENCE CONTINUED**

## **Geology – Open to 11, 12**

Requirement filled: Science  
Prerequisite: 9th grade sciences  
Content: Introduces basic landforms and geological processes. Topics include; rocks, minerals, volcanoes, fluvial processes, geological history, plate tectonics, glaciers, and coastal dynamics. Discuss the processes that shaped the earth over the course of its history.

## **Forensic Science I– Open to 11, 12**

Requirement filled: Science  
Prerequisite: A C 70% or better of Biology or Dual Credit Biology  
Content: Application of science to criminal justice system. Major topics include processing a crime scene, collecting and preserving evidence, identifying types of physical evidence, organic and inorganic analysis of evidence, hair, fibers, and paint, toxicology, arson and explosion investigation, DNA and fingerprint analysis.

## **Forensic Science II– Open to 11, 12**

Requirement filled: Science  
Prerequisite: C 70% or better in Forensic I & in Biology or Dual Credit Biology  
Content: Advanced application of science to criminal justice system. In depth, forensic concepts not covered in Forensic Science A. Students will work collaboratively to analyze data and evidence and apply that knowledge to solve crimes.

## **Physics A, B – Open to 11, 12**

Requirement filled: Science  
Prerequisite:  
Content:

## **Physics A, B – Open to 11, 12**

Requirement filled: Science  
Prerequisite: 9th grade sciences, Algebra II with a grade of a C or instructor approval  
Content: Studies of mechanics, sound, light, quantum theory, and nuclear physics. Highly recommended for students interested in careers in science or engineering.

## **Introduction to Astronomy – Open to 11, 12**

Requirement filled: Science  
Prerequisite: None  
Content: A study of the universe and the conditions, properties, and motions of bodies in space. The content includes, historical astronomy, astronomical instruments, the celestial sphere, the solar system, the earth as a system in space, the earth/moon system, the sun as a star, and stars. This course requires students make and record observations at night.

## **Environmental Science/ Field Ecology- Open to 11, 12**

Requirement filled: Science  
Prerequisite: 9th grade sciences, and Algebra II with a B or better  
Fee: \$30.00 Optional Field Trip  
Content: Introduction to engineering problem solving, engineering design, analysis of contemporary societal issues and methods of presenting engineering information. Design projects and/or presentations of current engineering challenges.

## **Genetics – Open to 11, 12**

Requirement filled: Science  
Prerequisite: Biology/ BIO201 with a 70% or better  
Content: Upper-level science elective. Principles of prokaryotic and eukaryotic cell genetics. Emphasis placed on the molecular basis of heredity, patterns of Mendelian and non- Mendelian inheritance, chromosome structure and disorders, population genetics, and biotechnology and genetic engineering.

# Dual Credit Science

## **\*AP Biology 201 A, B, C – Open to 10, 11, 12 – 4 CSI Credits (full year course)**

Requirement filled: Science

Prerequisite: 9th grade sciences with a B or better, 2.5 GPA

Fee: May be covered by Advanced Opportunities when student requests funding.

Content: Introducing principles and processes that apply to living systems, including current biological issues.

## **\*BIOL 100/BIOL 100L Concepts of Biology- Open to 11,12**

Associates Requirement: Scientific Ways of Knowing

Requirement filled: Science

Prerequisite: Bio A,B GPA of 2.5 or better

Fee: May be covered by Advanced Opportunities when student requests funding.

Content: We will consider scientific principles and their influence on environmental problems in today's society. The role of humans and our impact on these issues will be emphasized. Past, present, and future trends will be evaluated along with the possible impacts of these trends on the local and global populace.

## **\*GEOL 101 Physical Geology – Open to 11, 12 – 4 CSI Credits**

Requirement filled: Science

Associates Requirement: Scientific Ways of Knowing

Requirement filled: 9th grade Sciences, 2.5 GPA, Field trips will be held on Fridays, attendance is recommended.

Prerequisite: May be covered by advanced opportunities funding

Content: Investigates the composition of the Earth and external and internal processes that shape it. Within the context of plate tectonics, it explores the origins of rocks and minerals and dynamic processes such as volcanic and magmatic activity, seismicity, and crustal deformation that are driven by the continual release of the Earth's internal heat. Also examines how air, wind, water, and ice move in response to gravity and energy from the Sun, sculpting Earth's surface by eroding, transporting, and depositing rock materials.

## **\*Anatomy and Physiology HPSS2243– Open to 11, 12 - ISU 3 Credits ELE/PE**

Requirement filled: Science

Associates Requirement: Elective/PE

Prerequisite: 2.5 GPA

Fee: May be covered Advanced Opportunities when student requests funding.

Content: Study of human body structure and function, including the neuromuscular skeletal, circulatory, respiratory, digestive, endocrine, reproductive and other organ systems. Designed for health sciences and physical education students. Transfers to ISU as SSPE2243 Anatomical and Physiological Foundations of Human Activity and Function.

## **\*CHEM 100/100L: Chem for everyday life – Open to 11, 12 – CSI 4 Credits**

Requirement filled: Science

Associates Requirement: Scientific Ways of Knowing

Prerequisite: 2.5 GPA, B or better in Algebra

Fee: May be covered by Advanced Opportunities when student requests funding.

Content: This course is a presentation of the world of Chemistry as it impacts society and the individual. Topics include air and water quality, energy and fuels, nuclear power, nutrition and food, medicine and drug design. Emphasis is on the connection of Chemistry to everyday life. This course is intended for non-science students; very limited math skills are needed.

## **\*PHYS 100/100L Survey of Physics – Open to 11, 12 CWI 4 College credits**

Requirement filled: Science

Associates Requirement: Scientific Ways of Knowing

Prerequisite: GPA of 2.5 or better

Fee: May be covered by Advanced Opportunity when student requests funding.

Content: An introduction to the concepts of physics and their application to the world around us and beyond. This is a 4 credit course (3 lecture 1 lab) is intended for nonscience majors. Topics include the laws of motion, conservation of energy and momentum, properties of matter, heat, sound, electricity and magnetism, light, atomic and nuclear physics, and relativity.



# **BUSINESS/MARKETING**

# **BUSINESS AND MARKETING**

*Designed to prepare students for entry-level positions in the business world or for further studies in business, technical or college programs. Business courses fulfill elective and /or multimedia requirement.*

## **Gaining Employability Skills with Excel – Open to 10, 11, 12**

Requirement filled:	Multimedia
Prerequisite:	None
Content:	In today's workplace, Microsoft Excel is "the" tool for working with data. In this introductory course, you will gain the skills needed to create Excel worksheets, develop formulas, and apply sophisticated formatting to capture and present data. You will also have the opportunity to earn Microsoft Excel certification.

## **Business Computer Applications – Open to 9, 10, 11, 12**

Requirement filled	Multimedia
Prerequisite:	None
Content:	Gain employability skills by learning advanced application of Microsoft Word, Excel, PowerPoint, and Access. Earn your Microsoft certification as well.

## **\* BUSA 215: Introduction to Computer Applications – Open to 10, 11, 12 – 3 CSI Credits**

Requirement filled:	Multimedia
Associates Requirement:	Elective
Prerequisite:	3.0 GPA
Fee:	May be covered by Advanced Opportunities when student requests funding
Content:	Gain employability skills by learning advanced application of Microsoft Word, Excel, PowerPoint, and Access. Earn your Microsoft certification as well.

## **Publishing & Graphic Design – Open to 9, 10, 11, 12**

Requirement filled:	Multimedia
Prerequisite:	None
Content:	Learn graphic design and editing skills in Adobe Photoshop. Projects may include, but are not limited to the creation of logos, posters, ads, magazine spreads, information graphics, and book covers. Students will have the opportunity to become industry certified -Adobe Certified Professional in Visual Design. This certification is industry-recognized and demonstrates foundational skills and knowledge for digital media careers.

## **Advanced Publishing & Graphic Design 2 – Open to 10, 11, 12**

Requirement filled:	Multimedia
Prerequisite:	Publishing/Graphic Design
Content:	Advanced study of the principles of design. Industry standard design skills utilizing primarily Adobe Photoshop & Illustrator. Project-based class creating marketing materials for a designated company. Explore career opportunities in digital media.

## **Web Page Design I - Introduction - Open to 9, 10, 11, 12**

Requirement filled:	Multimedia
Prerequisite:	None
Content:	Utilize the latest industry standards graphical application for website development using HTML, CSS, and Adobe Dreamweaver CC2019.

## **Video Game Design – Open to 9, 10, 11, 12**

Requirement filled:	Multimedia
Prerequisite:	None
Content:	A broad exploration of the career of web and mobile game design. Students will experience game design, music development, sound effects, game graphics, game mechanics, and game testing.

# **BUSINESS & MARKETING CONTINUED**

## **Introduction to Computer Programming – Open to 9, 10, 11, 12**

Requirement filled: Multimedia  
Prerequisite: Must have passed Algebra I with a 73% or higher  
Content: Computer science, programming concepts, and programming. Design, enter, compile, run, and debug programs and gain understanding of how to break up large programming tasks into small, solvable parts to create effective working programs.

## **Business Administration – Open to 10, 11, 12**

Requirement filled: Elective  
Prerequisite:  
Content: Student will prepare for regional, state, and national BPA competitions while reviewing concepts such as banking, finance, credit, investment, accounting, the role of government in business, leadership, management, consumerism, economic systems, and other related fields.

## **Business Law Ethics Application/(Street Law) – Open to 10, 11, 12**

Requirement filled: Elective  
Prerequisite: None  
Content: Do you know your rights as a U.S. citizen? This course includes an overview of criminal and civil law, contracts, ethics, victims of crime, and other related topics. Student may also have the opportunity to visit the local jail during class.

## **Stock Market/Other Investment Strategies – Open to 10, 11, 12**

Requirement filled: Multimedia  
Fee: None, \$195 dual credit as FINA 102, may be covered by Advanced Opportunities  
Prerequisite: None  
Content: Learn how to become the next stock market guru! Course includes topics such as money management, stock, bonds, saving accounts, CDs, real estate, etc. Come have fun and participate in weekly classroom competitions to see who can make the most virtual money in the stock market while learning various financial concepts along the way.

## **\*FINA 102: Personal Finance - Open to 10, 11, 12 – 3 CWI Credits**

Requirement filled: Multimedia  
Associates Requirement: Information Literacy  
Fee: \$195 covered by Advanced Opportunities Scholarship when student requests funding.  
Content: Learn how to become the next stock market guru! Course includes topics such as money management, stock, bonds, saving accounts, CDs, real estate, etc. Come have fun and participate in weekly classroom competitions to see who can make the most virtual money in the stock market while learning various financial concepts along the way.

## **Sports and Entertainment Marketing – Open to 10, 11, 12**

Requirement filled: Multimedia  
Prerequisite: None  
Content: Learn art of marketing through sports & entertainment markets. Explore career opportunities in the field of sports & entertainment marketing. Participate in an RHS Sports Marketing Project.

## **Accounting I – Open to 11, 12**

Requirement filled: Elective  
Prerequisite: None  
Content: Explore basic accounting principles required to operate a successful sole proprietorship business.

## **Accounting II- Open to 11,12**

Requirement filled: Elective  
Prerequisite: Accounting I  
Content: Continuation of Accounting I and the basic accounting principles to operate a merchandising business.

# **BUSINESS & MARKETING CONTINUED**

## **Video Editing Technology – Open to 9, 10, 11, 12**

Requirement filled:	Multimedia
Prerequisite:	None
Content:	Create memories with all the photos and videos stored on your devices. Edit your own videos with industry leading software, Adobe Premiere. Explore a variety of all-in-one mobile and desktop video editors. Edit an entire video from beginning to end, using professional and efficient techniques.

## **Business Ownership/Entrepreneurship – Open to 10, 11, 12**

Requirement filled:	Multimedia
Prerequisite:	None
Content:	Ever dreamed of becoming owning your own business? Here's your chance! Learn how to design, create, finance, and manage your own business from the ground up.

## **\*BUSA 101: Introduction to Business – Open to 10, 11, 12 – 3 CWI Credits**

Requirement filled:	Multimedia
Associates Requirement:	Elective
Fee:	
Content:	May be covered by Advanced Opportunities when student requests funding. Ever dreamed of owning your own business? Here's your chance! Learn how to Design, Create, and Manage your own business from the ground up.

## **Career Exploration and Employment Prep – Open to 10, 11, 12**

Requirement filled:	Elective
Prerequisite:	None
Content:	<b><u>This is the prerequisite for receiving credit for Work Release.</u></b> Opportunity to explore various careers and develop your workplace readiness skills so that you enter the workforce prepared for success.

## **Business/Marketing Cooperative Education (Work Release) – Open to 11, 12 *Repeatable course***

Requirement filled:	Elective
Prerequisite:	Passed Career Exploration and Employment Prep and Business Ownership/BUSA 101
Content:	Allows students who have a job to receive high school <b>credit for 70 hours</b> worked per trimester employed in a job outside of school.

## **Computer Science Principles A - Open to 10, 11, 12**

Requirement filled:	Science/Math/ Multimedia
Prerequisite:	Passed 9th grade sciences, Algebra I or by teacher permission
Content:	Students learn how the multi-layered systems of the Internet function as you collaboratively solve problems and puzzles about encoding and transmitting data. Learn how computers store complex information like images, video, and sound. Use interactive widgets to explore concepts like image representation and compression. Learn the Java-script language with turtle programming coding environment. Learn general principles of algorithms and program design that apply to any programming language.

# ***COMMUNICATIONS***

# COMMUNICATIONS

## **Speech - Open to 10, 11, 12**

Requirement filled: Speech  
Prerequisite: None  
Content: Principles and practices of communicating, speaking, and presenting original speeches in class, and learning to offer constructive comments.

## **Debate – Open to 9, 10, 11, 12**

Requirement filled: Speech  
Prerequisite: None  
Content: Discuss both sides of current issues. Learn skills of argumentation and case preparation for competitive tournament debate. Extensive reading and research required for success.

## **Competitive Debate – Open to 10, 11, 12 *Repeatable course***

Requirement filled: Elective  
Prerequisite: Debate and consent of instructor  
Fee: \$175 transportation fee. Hotel fees of \$20-25 per overnight tournaments (3-4 per year)  
Content: Sharpen skills in research and argumentation, while improving as speakers, to successfully compete in tournaments. Extensive reading and research required as well as weekend participation at tournaments.

## **Agricultural Personal Skill Development (Agricultural Leadership) – Open to 10, 11, 12**

Requirement filled: Speech  
Prerequisite: Must pass Intro to Agricultural Education with a 70%. An approved Supervised Agricultural Experience project. Seating preference given to FFA members.  
Content: Ag leadership, citizenship, personal development, employee/employer relations skills. Students encouraged to join FFA and participate in FFA activities.

## **\*COMM 101: Fundamentals of Oral Communications - Open to 11, 12 - 3 CWI or CSI Credits**

Requirement filled: Speech  
Associates Requirement: Oral Communications  
Prerequisite: 3.0 GPA  
Fee: May be covered by Advanced Opportunities when student requests funding.  
Content: Students will develop and improve communication abilities in a variety of academic, social, personal, and business settings. This is a fun, interactive class where students will learn skills that they will use in every facet of their lives.

# ***ECONOMICS***

# ECONOMICS

## Economics – Open to 11, 12

Requirement filled:	Economics
Prerequisite:	None
Content:	Macro and Micro economic theories and their application in the United States and the world as well as a broad base of consumer skills. Emphasis will also be given for economical concepts of college or career readiness: including FAFSA, scholarships, and college application preparation. <b>Only Seniors/ early grads allowed each 3<sup>rd</sup> Tri.</b>

## Business Economics – Open to 12

Requirement filled	Economics
Prerequisite:	None
Content:	Macro and Micro economic theories and their application in the United States and the world with an emphasis on the economics of organization and business decision making as well as a broad base of consumer skills.

## Agricultural Business and Economics – Open to 12

Requirement filled:	Economics
Prerequisite:	Completion of 3 Agriculture Education courses with 70% or higher in each. An approved Supervised Agricultural Experience project. Seating preference given to FFA members.
Content:	Introduces agribusiness management in the free Enterprise system. Includes study of economic principles, budgeting, record keeping, finance, decision making, risk management, business law, marketing and careers in agribusiness.





# **FAMILY AND CONSUMER SCIENCES**

*Designed to assist students with the knowledge and skills to meet the challenges of every-day living and prepare for the workforce. The classes focus on food and nutrition, relationships, child development and parenting, interior design, apparel, textiles, and related occupations*

## **Teen Living A - Open to 9**

Requirement filled: Elective  
Prerequisite: None  
Content: An introduction to Family Consumer Sciences including self-management, foods and nutrition, communication, peer and family relationships, child development, and interior design.

## **Child Development – Open to 10, 11, 12**

Requirement filled: Elective  
Prerequisite: None  
Content: Concepts of teaching Pre-School: parenting skills, child growth and development.

## **Early Child Professions A – Open to 10, 11, 12**

Requirement filled: Elective  
Prerequisite: Parent and Child Development  
Content: Emphasizes teaching young children and careers in early childhood education.

## **Early Child Profession B – Open to 10, 11, 12**

Requirement filled: Elective  
Prerequisite: Parent and Child Development and Early Child Professions A  
Content: Emphasizes teaching young children and careers in early childhood professions. Students participate in the cross-age tutor program.

## **Fashion and Textiles I – Open to 9, 10, 11, 12**

Requirement filled: Elective  
Prerequisite: Fashion and Textiles I is a prerequisite for Fashion and Textiles II.  
Content: An introduction to clothing construction techniques, fashion design principles, textiles and clothing care.

## **Fashion and Textiles II – Open to 10, 11, 12**

Requirement filled: Elective  
Prerequisite: Fashion and Textiles I  
Content: Expanded skill development in clothing construction techniques, fashion design principles and textiles. Explores designers and their influence on the fashion industry throughout history.

## **Fashion and Textiles III – Open to 11, 12**

Requirement filled: Elective  
Prerequisite: Fashion and Textiles I, II  
Content: Advanced level clothing construction techniques, fashion design, and textiles with a business/industry focus.

## **Interior Design – Open to 10, 11, 12**

Requirement filled: Elective  
Prerequisite: None  
Content: Design principles as they relate to housing. Includes buying and other housing issues, interior decorating and design.

# **FAMILY & CONSUMER SCIENCES CONTINUED**

## **Nutrition and Foods – Open to 10, 11, 12**

Requirement filled: Elective  
Prerequisite: None  
Content: A cooking course that focuses on food preparation, nutrition, knife skills, and food safety and sanitation. Non-Repeatable

## **Food Science – Open to 10, 11, 12**

Requirement filled: Science  
Prerequisite: None  
Content: Principles of food science, safety and nutritional components of food. Non-Repeatable

## **Intro to Culinary Arts – Open to 11, 12**

Requirement filled: Elective  
Prerequisite: Nutrition & Foods  
Fee: Serve Safe Food Handler Exam May be covered by Advanced Opportunities  
Content: An introduction to the food service industry, knife skills, cooking methods, and ServSafe Food Handler Certification. Culinary exploration includes salads, sandwiches, soups, sauces, and baking. Non-Repeatable

## **Culinary Arts – Open to 11, 12 – 2 period class**

Requirement filled: Elective  
Prerequisite: Nutrition and Foods, and Intro to Culinary Arts, with teacher recommendation  
Fee: \$40 Servesafe examination cost may be covered by Advanced Opportunities funding.  
Content: Culinary exploration includes eggs, dairy, breakfast, fruits, vegetables, starches, meat, poultry, yeast breads, and dessert. Emphasizes menu planning, culinary math, and ServSafe Food Manager Certification.

# ***FINE ARTS***

# FINE/VISUAL ARTS

## **Videography (previously Broadcasting) Open to 9,10,11,12 Repeatable Course**

Requirement filled: Multimedia  
Prerequisite: None  
Fee: None  
Content: Introduction course designed to foster positive learning experiences while teaching the basic production techniques both behind and in front of the camera. Hands on course that involves high energy and active participation. Students will learn: proper camera framing, video editing, the main elements of news packages, how to operate the Tricaster and cameras, how to produce morning announcements, and stream school events. The class is designed to provide the necessary knowledge to run the school's equipment. After school activities are mandatory, no less than 4 hours a week.

## **Art 1 – Open to 9, 10, 11, 12**

Requirement filled: Humanities  
Prerequisite: None  
Fee: None, students are encouraged to bring some art supplies  
Content: Understanding and application of the elements and principles of art. Ability to determine what good art is. Understanding the work flow of an artist daily life and how to create good professional pieces of art. Draw and create realistic works of art using perspective, head drawing, and value to create form.

## **Art 2 – Open to 10, 11, 12**

Requirement filled: Humanities  
Prerequisite: Art I with a B or higher  
Fee: None, students are encouraged to bring art supplies  
Content: Expand on student understanding of the principles and elements of design. An emphasis will be placed on creating with different types of media, including charcoal, pastel, colored pencil, and pen and ink, ect...

## **Art 3 – Open to 10, 11, 12**

Requirement filled: Humanities  
Prerequisite: Art 2 with a B or better,  
Fee: None, students are encouraged to bring art supplies  
Content: Class will focus on figure drawing and perspective drawing. Students will learn how to draw the body with correct proportions as well as in different positions. Students will learn 2 and 3 point perspective. Students will work on a collaborative project using the skills they have been developing.

## **Painting 1 – Open to 9, 10, 11, 12**

Requirement filled: Humanities  
Prerequisite: Must have passed Art 1 with a B or higher  
Fee: Students are encouraged to provide their own paint brushes - see teacher for list.  
Content: An intro level course in painting with an emphasis on developing a greater depth of understanding of art and application of the Elements and Principles of Design to their work. Studio experiences include painting projects. Each student will demonstrate progress over time by developing a body of work. Students will understand how to effectively critique art work.

## **Painting 2 – Open to 9, 10, 11, 12**

Requirement filled: Humanities  
Prerequisite: Must have passed Painting 1 with a B or higher  
Fee: Students are encouraged to provide their own paint brushes - see teacher for list.  
Content: Students will pick one single medium to work with. Projects will be more student directed, focusing on composition and new ways to generate concepts. Emphasis will be on using the principles of art to create dynamic compositions.

### **Intro to Printmaking– Open to 10, 11, 12**

Requirement filled:	Elective
Prerequisite:	Art I
Content:	Introduces sever printmaking medias. Students will learn techniques, relief, intaglio, planographic and stencil. Basic principles of art will be stressed with printed art compositions.

### **Ceramics 1– Open to 9, 10, 11, 12**

Requirement filled:	Humanities
Prerequisite:	None
Content:	Historical and contemporary ceramic arts produced by various cultures. Understand the physical properties of clay; develop hand building; recognize the relationship of function to design. Understand glaze and kiln technology.

### **Ceramics 2 – Open to 10, 11, 12**

Requirement filled:	Humanities
Prerequisite:	Must have successfully passed Ceramics I with a B
Content:	Students will gain an understanding and be able to use the potter's wheel. Students will also gain an understanding of multi-step art work by using the wheel and hand building to create form. Students will also demonstrate knowledge in firing a kiln.

### **Ceramics 3 – Open to 10, 11, 12**

Requirement filled:	Humanities
Prerequisite:	Must have successfully passed Ceramics II with a B
Content:	Students will learn various wheel techniques, sketching, designing signatures, adv glazing techniques, transferring techniques, manipulation, drying construction introducing abstract and sculptural form. This course is a chance to learn some of the challenging aspects of being a potter and how to successfully overcome those steps.

### **Photography – Open to 9, 10, 11, 12 –**

Requirement filled:	Multimedia
Prerequisite:	None. Camera and SD card provided.
Content:	Learn how a DSLR camera works, and be able to control the settings of the camera. Students will gain a working knowledge of the camera and how to use the elements of art to create a work of art that creates emotion or tells a story. Students will also learn how to effectively critique photos in order to improve the art. Understand what it takes to make a living as a photographer.

### **Photography 2 – Open to 10, 11, 12 –**

Requirement filled:	Humanities
Prerequisite:	Must have earned a B in Photography, camera and SD card provided.
Content:	Advance student skills in the areas of learning and functions of Digital SLR cameras, studio lighting equipment, advancing post- processing skills, different styles of photography; image stitching, creating your own photo business, and creating a portfolio. Students will further their ability in the photo critique and demonstrate a working understanding of the elements and principles of design.

### **Yearbook– A, B, C - Open to 9, 10, 11, 12 *Repeatable Course***

Requirement filled:	Multimedia
Prerequisite:	Instructor permission (application must be submitted to instructor) Using graphic design principles, students will Design and compose the Iliad (RHS Yearbook). Students also take pictures at all school events and learn how to market a product.
Content:	<b>This course is a 3-trimester commitment.</b>

# FINE ARTS/ACTING

## **Drama Stagecraft – Open to 9, 10, 11, 12 Repeatable Course**

Requirement filled: Humanities  
Prerequisite: None  
Content: Instills and expands understanding of a variety of design and application practices in theatre. Further develop skills and techniques, as well as to create designs that visualize character and enhance the performance in a production. Design for a variety of theatrical practices including: make-up, costumes, sets, props, lights, etc.

## **Acting I– Open to 9, 10, 11, 12**

Requirement filled: Humanities  
Prerequisite: None  
Content: Develop fundamental skills in multiple elements of theatre. Students experience working as actors, directors, designers, playwrights, and much more.

## **Acting II – Open to 10, 11, 12**

Requirement filled: Humanities  
Prerequisite: Successful completion of Acting 1  
Content: Preparation for acting in full-length plays and for college-level acting classes by strengthening techniques in movement, improvisation, and playing truthful actions.

## **Improv Comedy Troupe– Open to 9,10,11,12**

Requirement filled: Humanities  
Prerequisite: Audition/ Teacher recommendation  
Content: This is a performance-based class where we learn, practice, and hone improv comedy techniques, skills, and games to prepare for monthly performances.

## **Troyplayers A, B, C – Open to 10, 11, 12 Repeatable course**

Requirement filled: Humanities  
Prerequisite: Acting 1 or Drama Stagecraft as well as an audition and instructor's consent.  
Content: Troyplayers – dramatic performance class at Rigby High School  
*1st Trimester Troyplayers:* ***Requires after school commitments, lifting heavy objects, and power tool use***  
Fall production Performers and Technicians. All students are required to audition for the show, but not all students perform on-stage. Each group is responsible for different aspects of the fall play; Receive exposure to both the performance and technical aspects of theatre.  
*2nd Trimester Troyplayers:* ***May involve some lifting of heavy objects, and possible power tool use.***  
Study of various theatrical events and practices. Learn about different forms of these arts and perform them in class. In a limited capacity, these students may also assist with minor aspects of the spring musical.  
*3rd Trimester Troyplayers:* ***Requires some after school rehearsals/performances***  
Continued look at various aspects of theatre; acting, technical theatre and design. Regular activities are blocking, scene work, beats, design, script analysis and some directing. Students run the Troyplayers' Showcase in May, which serves as this course's final.

## **\* THEA 1101: Survey of Theatre – Open to 10, 11, 12 – 3 ISU Credits**

Requirement filled: Humanities  
Associates Requirement: Humanistic & Artistic Ways of Knowing  
Prerequisite: 3.0 GPA  
Fee: May be covered by Advanced Opportunities Scholarship when student requests funding.  
Content: Audience-oriented course in the creative processes and aesthetic principles, which guide artists of the live theatre, film and television in the shaping and reflection of human value.

## **Musical Theatre – Open to 10, 11, 12**

Requirement filled: Humanities  
Associates Requirement:  
Prerequisite: 2.0 GPA , Any Choir or Acting 1  
Fee: May be covered by Advanced Opportunities Scholarship when student requests funding.  
Content:

# FINE ARTS/MUSIC

**NOTE: Band, Choir and Orchestra rehearsals, concerts, festivals, and music performances which take place outside of scheduled class time are defined as extensions of the formal classroom instructional program and, as such, require student participation and attendance.**

## **Varsity & Junior Varsity Jazz Band A, B, C – Open to 9- 12 – Repeatable course**

Requirement filled:	Humanities
Prerequisite:	Auditions and approval of instructor are required
Content	Study of Jazz music in a variety of genres.

## **Percussion Ensemble – Open to 9, 10, 11, 12 Repeatable course**

Requirement filled:	Humanities
Prerequisite:	None
Content:	Basics of percussion playing, reading rhythms and maintaining a steady pulse. Students have opportunity to experience a variety of percussion instruments and musical styles. Percussionists in this class will play for the Wind Ensemble and Concert band as well as perform percussion ensemble music. This is a two-trimester commitment.

## **Concert Band A,B, C – Open to 9, 10, 11, 12 Repeatable course**

Requirement filled:	Humanities
Prerequisite:	None – Previous Band experience preferred. Instructor notification for brand new band students is needed in order to identify the proper instrument to study
Content:	Sight reading and music theory of traditional and non-traditional concert literature.

## **Wind Ensemble A, B, C – Open to 9, 10, 11, 12 Repeatable course**

Requirement filled:	Humanities
Prerequisite:	Auditions and instructor approval required
Content:	Advanced study and performance of music written for wind and percussion. In addition to a large ensemble experience, students may be required to participate in a small ensemble and/or solo preparation. Students improve their individual musicianship through the study of their instruments as well as sight-reading and theory.

## **Acoustic Guitar- Open to 9, 10, 11, 12**

Requirement filled:	Humanities
Prerequisite:	None
Fee:	<u>Students must provide their own ACOUSTIC guitar</u>
Content:	Beginning Guitar.



**Concert Orchestra A, B, C – Open to 9, 10, 11, 12    *Repeatable course***

Requirement filled: Humanities  
Prerequisite: Previous orchestra experience required. Beginners may join if in private lessons.  
Content: Study of orchestral arrangements and performance. Sight reading and music theory.

**Symphonic Orchestra A, B, C – Open to 9, 10, 11, 12    *Repeatable course***

Requirement filled: Humanities  
Prerequisite: Auditions and instructor approval required  
Content: Advanced study and performance of music written for string instruments. In addition to the large ensemble experience, students may be required to participate in a small ensemble and/or solo preparation. Improve individual musicianship through the study of their instruments as well as sight-reading and theory.

**Women's Choir A, B, C – Open to 9, 10, 11, 12    *Repeatable course***

Requirement filled: Humanities  
Prerequisite: None, open enrollment (no audition)  
Fee: None. Concert uniform (dress or tuxedo) required; See Director for options.  
Content: Students perform at school and community events, and at least one performance per trimester, with competitions and festivals in the spring. Various styles of music such as barbershop, classical, pop, and patriotic. Emphasizes development of vocal skills, ear training, basics of music analysis, theory, listening skills, and sight singing. Students participate in mandatory concerts and represent RHS at Regional Festivals and events.

**Men's Chorus A, B, C – Open to 9, 10, 11, 12    *Repeatable course***

Requirement filled: Humanities  
Prerequisite: None, open enrollment (no audition)  
Fee: Concert uniform (dress or tuxedo) required; See Director for options.  
Content: A select choir of male singers. Emphasizes development of vocal skills, ear training, basics of music analysis, theory, listening skills, and sight singing, with particular attention paid to the changing voice. Various styles of music are studied, including barbershop, classical, pop, folk and patriotic. Students participate in mandatory concerts and represent RHS at Regional Festivals and events.

**Troylairs A, B, C – Open to 10, 11, 12    *Repeatable course***

Requirement filled: Humanities  
Prerequisite: Audition and Director approval required – Auditions are held in spring  
Fee: Students responsible to obtain concert uniform (dress or tuxedo); See Director  
Content: Intermediate, (SATB) choir. Enrollment in at least 2 trimesters offered is strongly encouraged. Perform at school and community events, and at least one concert per trimester, with competitions and festivals in the spring. Various styles of music such as barbershop, classical, pop and patriotic. Sight-reading and music theory. Students participate in mandatory concerts and represent RHS at Regional Festivals and events.

**Chamber Singers A, B, C – Open to 10, 11, 12    *Repeatable course***

Requirement filled: Humanities  
Prerequisite: Audition only. Participation in full year is required. Auditions held in Spring.  
Fee: Students responsible to obtain concert uniform (dress or tuxedo); See Director  
Content: A select, (SATB) ensemble of 40-50 students; RHS's most advanced vocal ensemble. Emphasizes development of vocal skills, music literacy, theory, basics of music analysis, sight singing, music listening skills, and music history. Singers are vocally challenged through an advanced level of singing and complex harmonies from choral music from Medieval Period up to 20th Century atonal compositions. Participate in mandatory concerts and represent RHS at Regionals and other Festivals. In addition to the regular concerts and department events, it is the obligation of the members in this group to participate in annual tours. Participation in full year is required.

**Jazz Choir A, B, C – Open to 9, 10, 11, 12    *Repeatable course***

Requirement filled: Humanities  
Prerequisite: Select mixed ensemble of 16 students by audition only.  
Fee: Students responsible to obtain concert uniform (dress or tuxedo); See Director Held during the zero hour, students are expected to concurrently enroll in one of the other choirs during the traditional school day; exceptions by director approval. Emphasizes development of vocal skills, music literacy, analysis and history as they pertain to the jazz genre, with special attention paid to performance techniques and traditions unique to jazz. Participate in mandatory concerts and represent RHS at Festivals. This group makes guest appearances for many community events and fundraisers. Students are expected participate in this course throughout the whole year, with limited exceptions granted by director.  
Content:

**Handbell Choir A, B, C – Open to 9, 10,    *Repeatable course***

Requirement Filled: Humanities  
Prerequisite: Some music reading ability is recommended, not required  
Fee: Students responsible to obtain concert uniform , handbell binder, handbell gloves  
Content: Performance based class with at least one performance per trimester. Course for those seeking to explore and utilize the technique and repertoire of English handbells. Emphasizes development of basics in music analysis, theory, listening skills, and sight reading. Enrollment in at least 2 trimesters is strongly encouraged.

**Advanced Handbell Choir A,B,C Open to 10,11,12    *Repeatable course***

Requirement Filled: Humanities  
Prerequisite: At least 2 trimesters of previous experience in Handbell Choir and Director Approval  
Fee: Students responsible to obtain concert uniform, handbell binder, handbell gloves  
Content: Performance based class with at least one performance per trimester. Course for those seeking to explore and utilize advanced techniques and repertoire of English handbells. Emphasizes development of basics in music analysis, theory, listening skills, and sight reading. Enrollment in at least 2 trimesters is required.

**\* MUSI 100: Survey of Jazz and Pop Music – Open to 11, 12 – 3 CSI Credits**

Requirement filled: Humanities  
Associates Gem 5 Humanistic & Artistic Ways of Knowing  
Requirement; 3.0 GPA  
Prerequisite: May be covered by Advanced Opportunities when student requests funding.  
Fee: A non-technical course designed to provide a basis for enjoyable listening through the discovery of stylistic differences between historical eras and the individual composers within the eras and through the awareness of the various performance media.  
Content:



# FOREIGN LANGUAGE

## French 1A, B - Open to 9, 10, 11, 12

Requirement filled: Humanities  
Prerequisite: None  
Content: Basic reading, writing and conversational skills of the French language.

## French 2A, B - Open to 10, 11, 12

Requirement filled: Humanities  
Prerequisite: None  
Content: Connection of French Language with cultural emphasis on the French speaking world.

## French 3A, B - Open to 11, 12

Requirement filled: Humanities  
Prerequisite: French 2 A,B with a C or higher  
Content: Continuation of French language with cultural emphasis on the French speaking world.

## Spanish 1A, B - Open to 9, 10, 11, 12

Requirement filled: Humanities  
Prerequisite: None  
Content: Intro to speaking, reading, writing and understanding the language and culture.

## Spanish 2A, B - Open to 10, 11, 12

Requirement filled: Humanities  
Prerequisite: Spanish 1A, B  
Content: Intermediate Spanish, focused on language and culture.

## Spanish 3A, B - Open to 11, 12

Requirement filled: Humanities  
Prerequisite: Spanish 2 A, B  
Content: Continuation of Intermediate Spanish, focused on language and culture.

# DUAL CREDIT FOREIGN LANGUAGE

## **\*SPAN 101: Elementary Spanish 1 – Open to 10, 11, 12 – 4 CWI Credits**

Requirement filled:	Humanities (equivalent of first year Spanish)
Associates Requirement:	Humanistic & Artistic Ways of Knowing
Prerequisite:	3.0 GPA
Fee:	May be covered by Advanced Opportunities when student requests funding.
Content:	Intro to speaking, reading, writing and understanding the language and culture.

## **\*SPAN 102: Elementary Spanish 2 – Open to 10, 11, 12 – 4 CWI Credits**

Requirement filled:	
Associates Requirement:	Humanities (Equivalent of second year Spanish)
Prerequisite:	Humanistic & Artistic Ways of Knowing
Fee:	Spanish 1A/B or SPAN 101, and a 3.0 GPA
Content:	May be covered by Advanced Opportunities when student requests funding. Intermediate Spanish, emphasis on use of language in practical situations.

## **\*SPAN 2210: Spanish for Health Care I– Open to 10, 11, 12 – 3 ISU Credits**

Requirement filled:	Humanities
Associates Requirement:	Elective Associates Requirement
Prerequisite:	Spanish 2B or SPAN 102, and a 3.0 GPA
Fee:	May be covered by Advanced Opportunities when student requests funding.
Content:	How to communicate proficiently in the health care field with Spanish speaking clients.

## **\*SPAN 2211: Spanish for Health Care II – Open to 10, 11, 12 – 3 ISU Credits**

Requirement filled:	Humanities
Associates Requirement:	Elective Associates Requirement
Prerequisite:	Spanish 2B or SPAN 102, and a 3.0 GPA and successful completion of SPAN 2210.
Fee:	May be covered by Advanced Opportunities Scholarship when student requests funding.
Content:	How to communicate proficiently in the health care field with Spanish speaking clients.



# HEALTH

## **Health – Open to 9, 10, 11, 12**

Requirement filled: Health  
Prerequisite: None  
Content: Promotes desirable health attitudes and behavior.

## **\* HLTH 255: Wellness Through Healthy Living – Open to 10, 11, 12 – 3 CSI Credits**

Requirement filled: Health  
Associates Requirement: Elective  
Prerequisite: 2.5 overall GPA  
Fee: May be covered by Advanced Opportunities when student requests funding.  
Content: Overview of current health topics relevant to students. Stimulates awareness of personal health decisions and their relationship to optimal self-care patterns and lifestyles.

## **EXHA104 Stay Active live well – Open to 10, 11, 12 – 1 CWI Credits**

Requirement filled: PE  
Associates Requirement: Elective  
Prerequisite: 2.5 overall GPA  
Fee: May be covered by Advanced Opportunities when student requests funding.  
Content: designed for students who seek an introduction to physical fitness and wellness experiences and will focus on providing useful information to students on the topics of behavior change and exercise planning, which will be used to create a life long plan to improve physical fitness.





# SOCIAL STUDIES/ HUMANITIES

## **Maximizing Personal Development (Decision Making) – Open to 9**

Requirement filled: Elective/Humanities

Prerequisite: None

Content: Personal growth of each teen. Activities to express honest views, without ridicule. Group and teambuilding activities to demonstrate importance of working together.

## **World History I (9th) II (10th)**

Requirement filled: Humanities

Prerequisite: Students will take World Hist I in 9th grade & the II section in 10th grade.

Content: Students will study perspectives of many different cultures and the events that shaped the world. Students will be expected to relate history to their own lives. Students will be expected to read and write in this class. World History I will cover Early Human History, The Middle East, Africa, India, and East Asia. World History II will cover European history from the Dark Ages through World War II.

## **US History A, B – Open to 11, 12**

Requirement filled: US History

Prerequisite: None

Content: U.S. History A covers United States history from exploration through the Progressive era. U.S. History B covers United States history from the Progressive Era to the present. Students are expected to relate history to their own lives. Students will be expected to read and write, as well as study primary and secondary documents related to U.S. History.

## **Contemporary World Issues– Open to 9, 10, 11, 12**

Requirement filled: Humanities

Prerequisite: None

Content: Contemporary World Issues introduces students to various issues facing the world today. Students will explore human rights, world health, gun rights, and the role of the United States in a changing world. This class is designed to eliminate much of the confusion surrounding these issues and allow students to form their own opinions on matters that affect their world. Students will evaluate the issues and propose solutions from a variety of perspectives.

## **Holocaust – Open to 11, 12**

Requirement filled: Humanities

Prerequisite: None

Content: This class is an intensive and comprehensive overview of the anti-Semitic policies of Nazi Germany's Third Reich. Primary focus will be placed on the survivors and victims of the Holocaust. Although one can succeed academically in this course, it is the mental component that is extremely rigorous and those who enter this class should be very aware of this condition of the classroom environment.

# **HUMANITIES/SOCIAL STUDIES CONTINUED**

**NEW!**

## **World Mythology Open to 10,11,12**

Requirement filled:	Elective/Humanities
Prerequisite:	None
Content:	Students will read and analogize mythology from around the world to understand patterns of cultural human development . Studies include stories of creation, apocalypse, gods, goddesses, heroes, and mythological animals. Students will explore the universality and social significance of myths and folklore to see how myths are still used to shape society today.

**NEW!**

## **Intro to Philosophy- Open to 10,11,12**

Requirement filled:	Elective/Humanities
Prerequisite:	World History A, B with a B or better
Content:	Examines the foundations of logic, ethics, epistemology, metaphysics and religion in both the classical and modern tradition. Primary sources and examples from the classical world, particularly Greece, constitute the main emphasis of reading and discussion along with significant works by modern authors. A high degree of competence and confidence in reading and writing is encouraged.

# DUAL CREDIT SOCIAL STUDIES & HUMANITIES

## **\*HIST 111: U.S. History 1 – Open to 11 – 3 CWI Credits**

Requirement filled:	U.S. History A
Associated Requirement:	Social & Behavioral Ways of Knowing
Prerequisite:	3.0 overall GPA
Fee:	May be covered by Advanced Opportunities when student requests funding.
Content:	Emphasis placed on tracing the development of the American political system, economic institutions, and the U.S. culture during the Colonial Period, Age of Revolution, National Era, Jacksonian Period and the Civil War.

## **\*HIST 112: U.S. History 2 – Open to 11 – 3 CWI Credits**

Requirement filled:	U.S. History B
Associated Requirement:	Social & Behavioral Ways of Knowing
Prerequisite:	3.0 cumulative GPA, successful completion of HIST 111
Fee:	May be covered by Advanced Opportunities when student requests funding. U.S.
Content:	History between 1865 and the present. Emphasis on tracing the development of political system, economic institutions, and the U.S. culture during the Gilded Age, Progressive Era, Great Depression, World Wars, and the Cold War.

## **\*HIST 118: U.S. History and Culture– Open to 11 - on University Place campus**

Requirement filled:	US History (1 trimester) <u>cannot take both HIST 1700 and HIST 118</u>
Associated Requirement:	Critical Thinking
Prerequisite:	3.0 cumulative GPA
Fee:	Please contact ISU for class fee information and availability.
Content:	3.0 overall GPA, students are responsible for transporting themselves to the campus. An introduction to U.S. History and culture, including cultural change over time.

## **\*PSYC 140: General Psychology – Open to 10, 11, 12 – 3 CWI College Credits**

Requirement filled:	Elective
Associated Requirement:	Social & Behavioral Ways of Knowing
Prerequisite:	3.0 GPA
Fee:	May be covered by Advanced Opportunities Scholarship when student requests funding.
Content:	This course presents the practical application of social science concepts related to interpersonal or people skills that are important in the modern world. Topics include understanding and managing oneself, dealing ethically and effectively with people, and strategies for success. This will be an amazing class of learning about others, as well as oneself.

# U.S. GOVERNMENT

## **U.S. Government A, B – Open to 12**

Requirement filled: U.S. Government A, B, Senior Project and Citizenship  
Prerequisite: None (Must take A before B)  
Content: Study of the origins, foundations and fundamentals of the United States Government. This class is a wonderful opportunity to look at the inner workings of the nation and world students live in! The Senior Capstone Project is completed in the Government A and the Civics Exam is completed in Government B.

## **\*POLS 101: American National Government A, B – Open to 12 – 3 CWI Credits**

Requirement filled: U.S. Government  
Associates Requirement: Social & Behavioral Ways of Knowing  
Prerequisite: Overall GPA of 2.5 or instructor permission  
Fee: May be covered by Advanced Opportunities when student requests funding. Text Book \$20-\$35  
Content: Introduces students to the study of Political Science. Many aspects of American government are introduced and discussed in a way that is interesting, challenging and applicable to the student's world. Students will be engaged in class discussions and will take apart all elements of current issues in the political world, as well. This class will broaden the horizons of students' view of politics, political ideology and the way they understand the news they are confronted with on a daily basis.

## **Student Leadership A, B, C (Student Council) - Open to 9, 10, 11, 12 – Zero Hour Repeatable course**

Requirement filled: Elective  
Prerequisite: Must maintain 3.0 cumulative GPA/current GPA at all times. No past or present discipline in community or with school. Students are expected to demonstrate exemplary behavior, conduct, and relationships with peers and staff. Chosen by student body election and teacher interview.  
Fee: No fee is required for the class. A partial payment of \$175.00 is collected for students who planned to travel to the state conference in February. STUCO gear or attendance to the conference, will have a cost. However, both of those are optional.  
Content: Various functions of student school body activities. Students will also study components of how to be a good leader, how to build climate and culture in their school and strengthen their communication skills. This class is a wonderful adventure in learning, shaping, growing and working. It is also a zero hour course, so students must have transportation to class.



# PHYSICAL EDUCATION

*All non Dual enrollment PE courses repeatable  
although, only 1 PE class may be taken per tri.*

## **Lifetime Sports – Open to 9, 10, 11, 12      *Repeatable course***

Requirement filled: Physical Education  
Prerequisite: None  
Content: Introduction to a wide variety of team and individual sports and activities that one might encounter in an intramural sports program at the college level or to participate in as an adult to promote lifetime fitness. Class also includes various fitness and warm-ups to increase fitness levels.

## **Personal Fitness – Open to 9, 10, 11, 12      *Repeatable course***

Requirement filled: Physical Education  
Prerequisite: None  
Content: Become fit through exercise. Participate in a number of aerobic and anaerobic workouts, body weight, weight-training workouts, games, and other activities to achieve goals.

## **Strength and Conditioning Boys – Open to 9, 10, 11, 12      *Repeatable course***

Requirement filled: Physical Education  
Prerequisite: None  
Content: Muscular strength and cardiovascular training and endurance.

## **Strength and Conditioning Girls – Open to 9, 10, 11, 12      *Repeatable course***

Requirement filled: Physical Education  
Prerequisite: None  
Content: Muscular strength and cardiovascular training and endurance.

### **Strength and Conditioning III** Basketball, Football, Track, Soccer, Cross Country, Dance

Requirement filled: Physical Education  
Prerequisite: None, although, preference given to athletes in the specific sports  
Content: Muscular strength and cardiovascular training and endurance to promote growth in specific sport.

#### **\* EXHA 104: Stay Active Live Well – Open to 10, 11, 12 – 1 CWI Credit**

Requirement filled: Physical Education  
Prerequisite: 3.0 GPA, or instructor approval  
Fee: May be covered by Advanced Opportunities Scholarship when student requests funding. Students will learn the correct techniques, principles, and components to a physical fitness program to increase muscle strength, endurance, and cardiovascular endurance. Students will keep a journal and create goals they want to achieve while in the class.  
Content:

#### **Strength and Conditioning Basketball – Open to 9, 10, 11, 12**

Requirement filled: Physical Education  
Prerequisite: Basketball team  
Content: Intended for the development of basketball team members individual fundamentals while conditioning and weight training to increase jumping and agility.

#### **Strength and Conditioning Football – Open to 9, 10, 11, 12**

**1<sup>st</sup> trimester FB team members only 2<sup>nd</sup> & 3<sup>rd</sup> Trimester open to all boys**

Requirement filled: Elective (if Gonzalez is the teacher) Physical Education (if teacher is PE certified)  
Prerequisite: Try-Out, approved by team coach  
Content: Rigby High School Football Team

### **Athletic Teams - Open to 9, 10, 11, 12**

Fees: Spirit pack and other fees may be assessed per sport.

#### **FALL SPORTS**

Cheerleading  
Dance Team  
Football  
Boys/ Girls Soccer  
Cross Country  
Swim Team  
Volleyball

#### **Winter Sports**

Cheerleading  
Dance Team  
Wrestling  
Boys/ Girls Basketball

#### **Spring Sports**

Baseball  
Softball  
Tennis  
Track & Field  
Golf





# EDUCATION TRACK

## **Tutoring Practicum I – Open to 10, 11, 12    *Repeatable course***

Requirement filled: Elective  
Prerequisite: Excellent attendance record. 2.5 GPA. No major discipline issues. Open to those who did not lose credit due to absenteeism in the previous trimester.  
Content: This hands-on course provides an opportunity for RHS students to work with elementary school children tutoring in reading, writing and other areas under the supervision of the classroom teacher. Students are transported to and from local elementary schools by district bus. Consistent attendance in hour 1 is required. Students receive one elective credit per trimester

## **Teacher Aide – Open to 11, 12    *Repeatable course***

Requirement filled: Elective  
Prerequisite: 3.0 GPA, Teacher written approval, and have passed the teacher's course with a B  
Content: Consists of, but not limited to, assisting teachers with managerial and tutoring tasks.

**NEW!**

## **EDUC 201: Foundations of Education 3 CSI cr. Open to 10,11,12**

Requirement filled: Elective  
Associate Requirement: Elective  
Prerequisite:  
Fee: May be Covered by Advanced Opportunities when student requests funding  
Content: This course introduces social, philosophical, and historical perspectives in education. Students will examine the teaching field, current trends, and teaching as a profession. (This class includes portfolio entry: autobiographical essay. Fulfills Idaho Core Teacher 6 and 9).

**NEW!**

## **EDUC 202: Field Experience 1 CSI cr. Open to 10,11,12**

Requirement filled: Elective  
Associate Requirement: Elective  
Prerequisite:  
Fee: May be covered by Advanced Opportunities when student requests funding  
Content: This course provides students with practical experience in K-12 classrooms and weekly discussions regarding professionalism in teaching. Under the supervision of a cooperating teacher, students will complete 30 hours observing and aiding their mentor teacher. (This course addresses Idaho Core Teacher Standards 1). Background Check required.

**NEW!**

## **EDUC 204: Families, Communities and Culture 3 CSI cr. Open to 10,11,12**

Requirement filled: Elective  
Associate Requirement: Elective  
Prerequisite:  
Fee: May be covered by Advanced Opportunities Scholarship when student requests funding  
Content: This course examines the interactions of schools, families, communities, and diverse cultures as a basis for reflecting on the social context of learning. This course is a general education course and meets the Idaho Social and Behavioral Ways of Knowing Outcomes.

**NEW!**

**EDUC 205: Development and Individual Differences 3 CSI cr. Open to 10,11,12**

Requirement filled: Elective  
Associate Requirement: Elective  
Prerequisite: EDUC201, or by teacher recommendation  
Fee: May be covered by Advanced Opportunities when student requests funding  
Content: This course examines the areas of exceptionality as identified in the laws and policies related to individualized education and considered as a basis for reflecting on human development/ individual differences and diversity in the school. This course includes a case study that requires observation. Fulfills Idaho Core Teacher Standards 2, 6, and 9. A background check is required.

**NEW!**

**EDUC 215: Educational Technology 3 CSI cr. Open to 11,12**

Requirement filled: Elective  
Associate Requirement: Elective  
Prerequisite: EDUC, 201,202  
Fee: May be covered by Advanced Opportunities when student requests funding  
Content: This course is designed to give students hands-on experience integrating technology into the curriculum. Students will engage in a wide range of activities and projects resulting in a practical understanding that teaching concepts and skills require expertise in various instructional methods and strategies. This course emphasizes the International Society for Technology in Education Standards (ISTE) 1, 2 and 3 and Idaho Core Teacher Standard (ICTS) 3, 5 and 8.

**NEW!**

**EDUC 290: Educational Technology Exit Seminar 1 CSI cr. Open to 12**

Requirement filled: Elective  
Associate Requirement: Elective  
Prerequisite: EDUC; 201,202  
Fee: May be covered by Advanced Opportunities when student requests funding  
Content: This is the capstone course in the Teacher Education Program. Students will complete a professional outcomes portfolio. Students will be introduced to representatives from Idaho institutions and encouraged to complete application materials for their institution of choice. Fulfills Idaho Core Teacher Standards 1, 2, 6, 9, & 10

# EDUCATIONAL SUPPORT

These courses are by Teacher, Counselor or Administration approval

## **Tutoring Practicum I – Open to 10, 11, 12     *Repeatable course***

Requirement filled: Elective  
Prerequisite: Counselor or program coordinator's permission and excellent attendance record. 2.5 GPA. No major discipline issues. Open to those who did not lose credit due to absenteeism in the previous trimester.  
Content: Assist elementary students under supervision of teacher on site.

## **Counseling Aide – Open to 11, 12     *Repeatable course***

Requirement filled: Elective  
Prerequisite: 3.0 GPA, good high school attendance and Counseling Office approval.  
Content: Help the daily functioning of the Counseling team. Students will be part of cultivating a warm and welcoming feeling in the counseling office. Phone/ office etiquette, and overall good human skills will be taught.

## **Library Aide – Open to 11, 12     *Repeatable course***

Requirement filled: Elective  
Prerequisite: 3.0 GPA, librarian approval  
Content: Library aides will have the responsibility of monitoring and managing the front desk. This includes checking books and materials out to students and staff as well as checking books in and shelve them by sections. Other duties include; delivering notes to classes for book holds and library fines, sorting and managing their assigned book area, and light cleaning duties every other Friday.

## **Office Aide – Open to 11, 12     *Repeatable course***

Requirement filled: Elective  
Prerequisite: 3.0 GPA, good attendance and NO discipline record along with Office Staff/Admin approval  
Content: Work directly under the principal's secretary-performing tasks required for the daily functioning of the administration's office.

## **Teacher Aide – Open to 11, 12     *Repeatable course***

Requirement filled: Elective  
Prerequisite: 3.0 GPA, Teacher written approval, and have taken passed the course  
Content: Consists of, but not limited, to assisting teachers with managerial and tutoring tasks.

# HEALTHCARE EDUCATION

## **Fundamentals of Health Professions IDLA– Open to 10, 11, 12**

Requirement filled: Elective  
Prerequisite: 2.5 overall GPA  
Content: This course is designed for students entering vocational/technical programs for training in a health care profession.

## **Medical Terminology IDLA – Open to 10, 11, 12**

Requirement filled: Elective  
Prerequisite: Overall GPA of 2.5 and Fundamentals of Health Professions  
Content: Medical terminology according to each body system and provides the fundamental knowledge that is common to all health professions. Requires excellent attendance and discipline to work independently.

## **HCT140 Nursing Assistant (CNA) – Open to 11, 12 – (2 period class, Zero & 1st hour)**

Requirement filled: Elective  
Prerequisite: Overall 2.5 GPA. Fundamentals of Health Professions and Medical Terminology with a passing grade of an 80%, B American Heart Association Health Care Provider CPR certification  
Fee: \$45 for Clinical Insurance. Students pay for required background check and must provide for their own scrubs, tennis shoes, verification of current immunizations, T.B. skin check, transportation to the clinical settings, and watch with a second hand.  
Content: Prepares students for beginning employment as nursing assistants in nursing homes, hospitals, and other medical settings. Medical terminology, anatomy and physiology, care of the patient, and assisting as a member of the health care team. Required clinicals involve evening hours. Students must commit. Successful completion qualifies students to test for the Idaho State Board of Nursing Registry for Nursing Assistant. Must be age 16 to sit for the certification exam. Exam covered by Fast Forward funds.

## **SPAN 2210, 2211: Spanish for Health Care I and II – Open to 11, 12 – 6 ISU Credits**

Requirement filled: Humanities  
Associate Requirement: Elective Associates Requirement  
Prerequisite: Spanish 2B or SPAN 102 with a B or better, and a 3.0 GPA (or instructor permission)  
Fee: May be covered by Advanced Opportunities Scholarship when student requests funding.  
Content: How to communicate proficiently in the health care field with Spanish speaking clients. Integrates thematically-related vocabulary, grammar and culture with emphasis on occupational communication.



# Immersion Program

## **9th Honors Spanish A,B Open to-9th grade immersion participants only**

Requirement filled: Humanities

Prerequisite: Immersion participant

Fee: NA

Content:

## **9th Honors Chinese A,B Open to- 9th grade immersion participants only**

Requirement filled: Humanities

Prerequisite: Immersion participant

Fee: NA

Content:

## **10th Spanish Language & Culture A,B Open to-10th grade immersion participants only**

Requirement filled: Humanities

Prerequisite: Immersion participant

Fee: NA

Content: This course is designed for students who do not pass the AP Language and Culture Exam at the end of 9th grade. Immersion students who do not pass AP test at the end of 9th grade

(score 2 or lower) must enroll in this course.

## **10th Chinese Language & Culture A,B Open to- 10th grade immersion participants only**

Requirement filled: Humanities

Prerequisite: Immersion participant

Fee: NA

Content: This course is designed for students who do not pass the AP Language and Culture Exam at the end of 9th grade. Immersion students who do not pass AP test at the end of 9th grade

(score 2 or lower) must enroll in this course.

## **10th Spanish Language & Culture A,B Open to-10th grade immersion participants only**

Requirement filled: Humanities

Prerequisite: Immersion participant.

Fee: NA

Content:

## **10th Chinese Language & Culture A,B Open to- 10th grade immersion participants only**

Requirement filled: Humanities

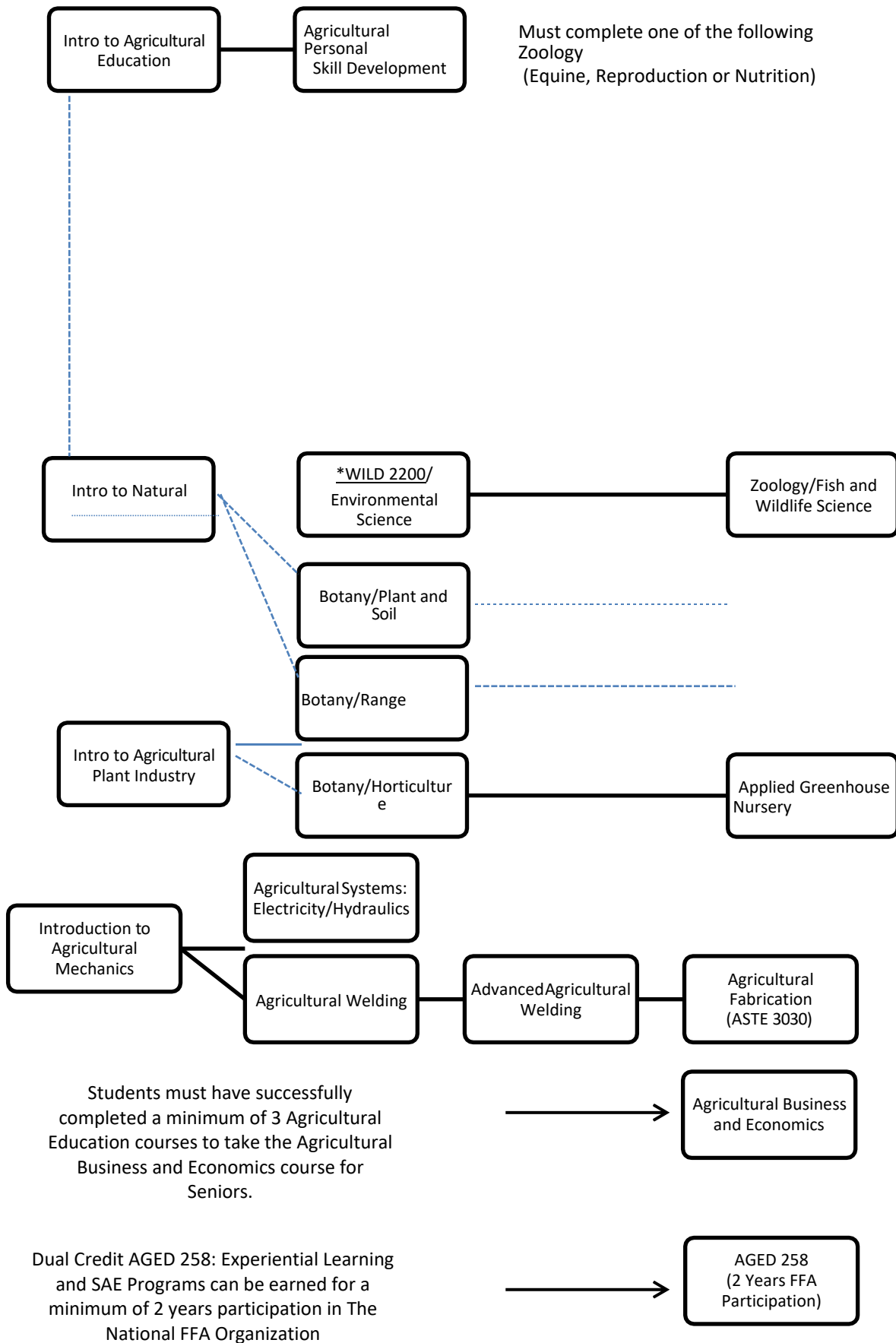
Prerequisite: Immersion participant.

Fee: NA

Content:

# CAREER-TECHNICAL EDUCATION

Career Technical Education programs educate students to be college and career-ready and prepare them for high-wage, high-demand career fields. Students will gain skills and experience needed to succeed in the jobs of the future. CTE courses provide students with technical skills, knowledge, and attitudes necessary for successful performance in a highly effective workplace.





## CAREER-TECHNICAL EDUCATION

*Career Technical Education programs educate students to be college and career-ready and prepare them for high-wage, high-demand career fields. Students will gain skills and experience needed to succeed in the jobs of the future. CTE courses provide students with technical skills, knowledge, and attitudes necessary for successful performance in a highly effective workplace.*

## AGRICULTURE EDUCATION

*Students strongly encouraged to join The National FFA organization. A Supervised Agricultural Experience (SAE) is required. It may be production (raising crops or animals), employment (having a job), exploratory (extended job shadow), or research area. Students are required to maintain records. Related management experiences are learned and practiced in conjunction with related course curriculum.*

## AGRICULTURAL SCIENCES

**Seating preference will be given to FFA members for all Agriculture classes.**

### **Environmental Science– Open to 10, 11, 12**

Requirement filled: Lab science  
Prerequisite: None, Introduction to Natural Resources preferred  
Content: Agricultural/industrial chemical issues, habitat preservation/restoration, remediation of damaged resources, conservation practices, environmental law and current issues.

### **Botany/Horticulture Plant Science – Open to 10, 11, 12**

Requirement filled: Lab science  
Prerequisite: None, Introduction to the Agricultural Plant Industry preferred  
Content: Examines importance of plant cell structure and functions, plant processes, vascular plants, roots, stems, leaves, flowers and reproduction of plants. Prepares students to produce greenhouse/nursery plants and to maintain plant growth.

### **Botany/Plant and Soil Science - Open to 10, 11, 12**

Requirement filled: Lab science  
Prerequisite: None, Introductory course in Plant Science or Natural Resources preferred  
Content: Students will explore soils formation, evolution, soil fertility, and soil conservation. Students will then explore, plant systems, agronomic plant identification, plant pests including weeds and their management, and the science of GMO's and biotechnology.

### **Botany/Range Science – Open to 10, 11, 12**

Requirement filled: Lab science  
Prerequisite: None, Introduction to Natural Resources preferred  
Content: Integrated course to acquaint students with environmental, biological and ecological principles of both soils and rangelands. Explore the diversity of rangeland and its uses.

### **Zoology/Science of Animal Nutrition – Open 10, 11, 12**

Requirement filled: Lab science  
Prerequisite: None, Introduction to Livestock Industry preferred  
Content: Explore the process of animal physiology, nutrition, digestion and value of feed nutrients.

### **Zoology/Science of Animal Reproduction – Open 10, 11, 12**

Requirement filled: Lab science  
Prerequisite: None, Introduction to Livestock Industry preferred, but not required  
Content: Reproduction and physiology of domestic animals. Principles of genetics and heredity.

### **Zoology/Small Animal Production and Care – Open to 11, 12**

Requirement filled: Lab science  
Prerequisite: Pass both Zoology Animal Nutrition and Zoology Animal Reproduction with 70%  
Content: This course will explore Small Animal Production and Care and introductory veterinary medical practices for managing small animal species.

### **Zoology/Fish and Wildlife Science– Open to 10, 11, 12**

Requirement filled:	Lab science
Prerequisite:	Environmental Science with 70% or higher
Content:	Examines the importance of fish and wildlife science, outdoor recreation and natural resources. Identify local wildlife species, resolve wildlife management issues, and understand the biological, ecological, and environmental aspects involved in the wildlife industry.

### **Veterinary Sciences – Open 11, 12**

Requirement filled:	Lab science
Prerequisite:	Small Animal Production and Care with 70% or higher
Content:	Career exploration, trends, and student leadership related to animals. Understanding animal systems, manage animal health and explores diseases and disease prevention.

## **ELECTIVE AGRICULTURAL COURSES**

### **Intro to Agricultural Education- Open to 9, 10**

Requirement filled:	Elective
Prerequisite:	None
Content:	Introduction to agriculture, business and all phases of the agricultural industry.

### **Intro to Livestock Industry – Open to 9, 10**

Requirement filled:	Elective
Prerequisite:	None, Introduction to Agricultural Education preferred
Content:	Principles of evaluation and selection of beef, swine, sheep, horse and dairy animals. Understand the parts of these animals and management practices associated with their species. Emphasizes value of livestock projects and uses an online record keeping system.

### **Intro to the Agricultural Plant Industry – Open to 9, 10**

Requirement filled:	Elective
Prerequisite:	None, Introduction to Agricultural Education preferred
Content:	Examines soil and plant relationships that affect the production of food and fiber. Includes: plant anatomy, soils, irrigation, land judging, plants, crop and weed identification, diseases, insects and chemicals.

### **Introduction to Natural Resources – Open to 9, 10**

Requirement filled:	Elective
Prerequisite:	None, Introduction to Agricultural Education preferred
Content:	This introductory course will provide the foundation for classes in the Natural Resources pathway. Students will understand principles of ecology and natural resources, the relationship between natural resources and ecosystem services, and the role ecosystems play in various aspects of agricultural production.

### **Introduction to Agricultural Mechanics - Open to 9, 10, 11**

Requirement filled:	Elective
Prerequisite:	None, Introduction to Agricultural Education preferred
Fee:	Students are required to provide: coveralls, welding helmet, gloves and safety glasses.
Content:	Basic mechanical theory and skills. Develop skills in electricity, plumbing, concrete, surveying, metal working and welding processes. Emphasizes safety and proper use of tools and equipment.

# **ELECTIVE AGRICULTURAL COURSES**

## **Continued**

### **Applied Livestock Management - Open 10, 11, 12**

Requirement filled: Elective  
Prerequisite: Introduction to Livestock Industry and Zoology (Nutrition or Reproduction) with 70% or higher  
Content: Develop skills involved with the management and responsible ownership of Agricultural Animals. Includes: reproduction, feeds and feeding, health, training, tack and equipment, facilities and business management.

### **Applied Equine Management – Open to 10, 11, 12**

Requirement filled: Elective  
Prerequisite: Introduction to Livestock Industry and Zoology (Nutrition or Reproduction) with 70% or higher  
Content: Develop knowledge and skills pertaining to management of nutrition, reproduction, diseases, breeding, genetics, anatomy, physiology and training of horses.

### **Applied Greenhouse Nursery Management – Open to 11, 12**

Requirement filled: Elective  
Prerequisite: Botany/Horticulture Plant Science with 70% or higher  
Content: Greenhouse and Nursery Operation and Management. Develop and conduct experiments, solve issues regarding growth and propagating of nursery plants, and operate greenhouse facilities.

### **Agricultural Systems: Electricity and Hydraulics - Open to 10, 11, 12**

Requirement filled: Elective  
Prerequisite: Introduction to Agricultural Mechanics with 70% or higher  
Fee: Students provide coveralls, gloves and safety glasses  
Content: Students will explore how power affects life, from electricity, electric motors and hydraulics to GPS. Students will become competent in the processes used to operate, repair, engineer and design agricultural tools and equipment. Students will learn to perform residential wiring skills.

### **WELD 107 Agricultural Welding - Open to 10, 11, 12 CSI – 2 credits)**

Requirement filled: Elective  
Prerequisite: Introduction to Agriculture Mechanics with 70% or higher  
Fee: Students are required to provide: coveralls, welding helmet, gloves and safety glasses. Fast Forward money can be used to pay for college credits.  
Content: Students develop skills in arc and oxy acetylene welding processes.

### **WELD 151 Advanced Agricultural Welding - Open to 10, 11, 12 (Dual Credit with CSI – , 4 credits)**

Requirement filled: Elective  
Prerequisite: Agricultural Welding with 70% or better  
Fee: Students are required to provide: coveralls, welding helmet, gloves and safety glasses. Fast Forward money can be used to pay for college credits.  
Content: Students will develop skills in MIG (metal inert gas) and TIG (tungsten inert gas) welding and the processes that deal with the joining of metal for the agricultural industry. Students will work toward industry certifications.

### **Agricultural Personal Skill Development (Agricultural Leadership) – Open to 10, 11, 12**

Requirement filled: Speech  
Prerequisite: Must pass Intro to Agricultural Education with a 70%. An approved Supervised Agricultural Experience project. Seating preference given to FFA members.  
Content: Ag leadership, citizenship, personal dev, employee/employer relations skills.

# **ELECTIVE AGRICULTURAL COURSES**

## **Continued**

### **WELD 149 & WELD 154 Agricultural Fabrication - Open to 10, 11, 12 (two trimester commitment)**

#### **1<sup>st</sup> Trimester – CSI 2 credits, 2<sup>nd</sup> Trimester – CSI 2 credits**

Requirement filled:	Elective
Prerequisite:	Advanced Agricultural Welding with 70% or higher
Fee:	Students are required to provide: coveralls, welding helmet, gloves and safety glasses. Students may build a personal project, if a personal project is fabricated the student will be required to pay for the materials and associated costs.
	Fast Forward money can be used to pay for college credits.
Content:	Develop skills in metal fabrication. Students are expected to complete a metal project and complete a project report. May be available for dual credit, see instructor.

### **\*AGED 258: Experiential Learning and SAE Programs - Open to 11, 12 U of I - 1 Credit**

Requirement filled:	Elective
Prerequisite:	Minimum of 2 years of FFA participation
Content:	Completion of records and applying for a State FFA Degree and/or FFA proficiency award.

*The following courses' descriptions are offered by the Agricultural Education department and listed previously.*

**Agricultural Business and Economics – Open to 12**

**Agricultural Personal Skill Development (Agricultural Leadership) – Open to 10, 11, 12**

**Botany/Horticulture Plant Science – Open to 10, 11, 12**

**Botany/Plant and Soil Science - Open to 10, 11, 12**

**Botany/Range Science – Open to 10, 11, 12**

**Environmental Science – Open to 10, 11, 12**

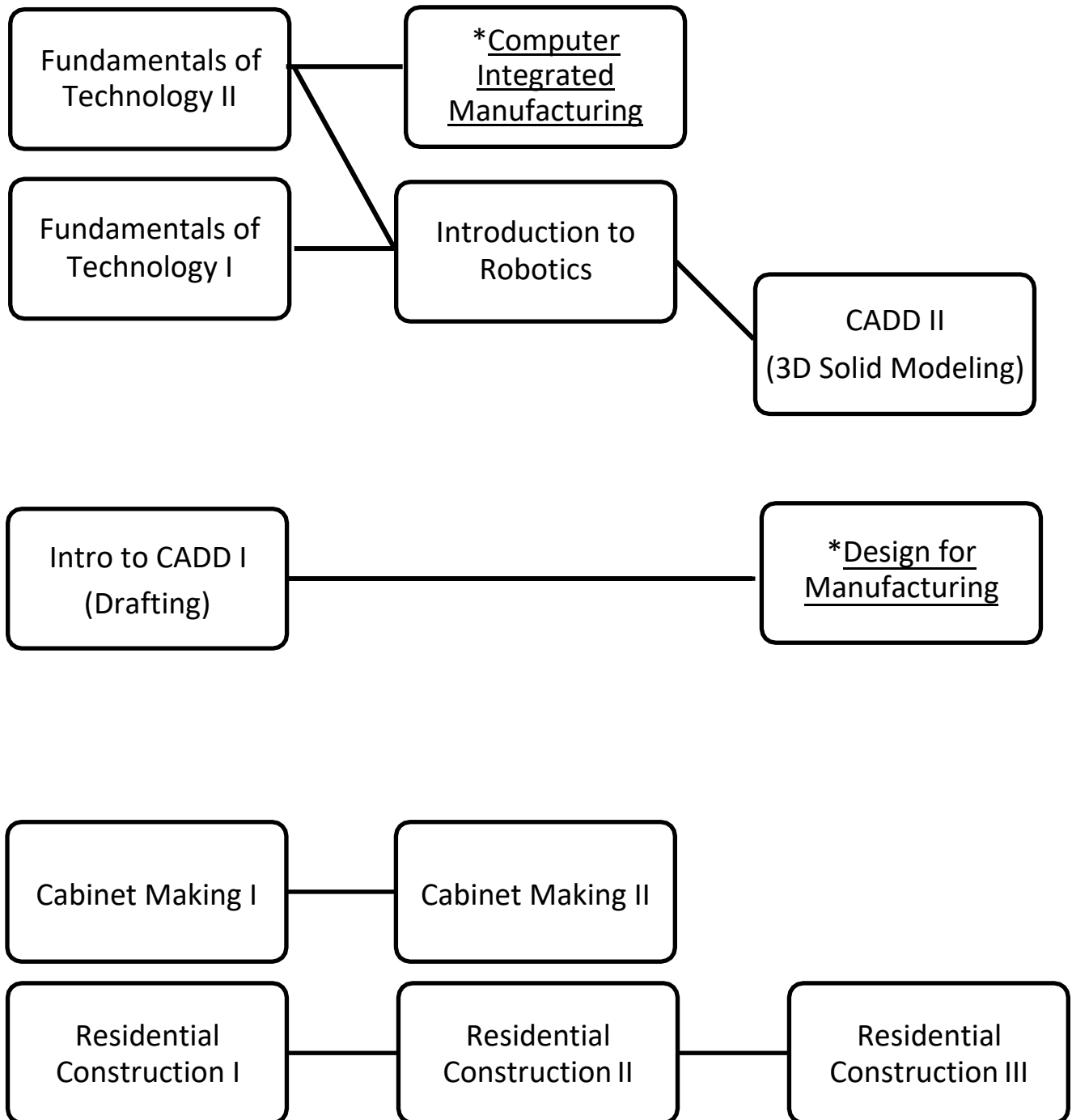
**Veterinary Sciences – Open 11, 12**

**Zoology/Fish and Wildlife Science– Open to 10, 11, 12**

**Zoology/Science of Animal Nutrition – Open 10, 11, 12**

**Zoology/Science of Animal Reproduction – Open 10, 11, 12**

**Zoology/Small Animal Production and Care – Open to 11, 12**



# CTE ENGINEERING EDUCATION

These courses include Automotive Technology, Construction, Engineering, and Cabinet Making

## ENGINEERING TECHNOLOGY

### **Fundamentals of Technology I, II Open to 9, 10, 11, 12**

Requirement filled: I: Elective, II: Multimedia  
Prerequisite: Both trimesters preferred, do not need to be taken in order  
Content: Principles and skills used in subsequent technology courses.

#### ***Technology I: Shop Based***

Build models, and apply creative problem solving methods. Emphasizes accessing and communicating information, using simple and complex tools in a safe manner, and increasing awareness of the historical and contemporary implications of technology.

#### ***Technology II: Computer Based***

Sketch solutions to problems, create technical drawings and presentations, build models, and apply creative problem solving methods. Computer-aided graphics, design software, and computer-aided manufacturing.

### **Introduction to Robotics A - Open to 9, 10, 11, 12**

Requirement filled: Elective  
Prerequisite: None  
Content: Design, use and technology of robots commonly found in industrial and consumer applications. Design model robots using mechanical devices and explore computer controlled applications. Applications of specialized materials and composites are studied to determine structural and durability characteristics. Electronic components devices are studied and used in model development. Basic programming languages.

### **Introduction to Robotics B- Open to 9,10, 11, 12**

Requirement filled: Elective  
Prerequisite: Robotics A or instructor permission  
Content: Vex Robotics Competition Class. This class is for the sole purpose of students to be able to compete in the vigorous VEX Competition. Those in the class will be expected to Join the robotics club as well.

### **Intro to CADD I: (Drafting) – Open to 9, 10, 11, 12**

Requirement filled: Multimedia  
Prerequisite: None  
Content: Emphasis is placed on the application of computer software in solving basic architectural, structural, electronic or mechanical drafting problems. The course assists individuals in making meaningful occupational and educational choices. Basic technical information and laboratory experiences directly related to the operation and application of computer software is provided in a hands-on approach.

### **CADD II: (3D Solid Modeling) – Open to 9, 10, 11, 12**

Requirement filled: Elective  
Prerequisite: Intro to CADD I  
Content: Create ideas such as artificial heart components, extreme sports equipment, hip replacement parts, robotic arm components, musical instruments and their parts and others. 3D printing will be used to solve problems and expand the learning process.

# CONSTRUCTION

## **Cabinet Making Level I - Open to 9, 10, 11, 12**

Requirement filled: Elective  
Prerequisite: None  
Content: This class will allow the students to work with materials and equipment commonly used in the cabinet making and wood working industries. Most of our class time will be spent in the shop area working with equipment to build student projects. Students will learn equipment and tool safety practices in the shop area. Students will design and complete projects throughout the trimester. Emphasis will be for the students to become familiar with and use the shop equipment and tools and accuracy in measurements. Additional skills practiced will include identification of building materials, basic math, clear communication, and blueprint reading.

## **Cabinet Making Level II - Open to 9, 10, 11, 12**

Requirement filled: Elective  
Prerequisite: Cabinet Making Level I with a grade of a B or better  
Content: This is a project-based course. Students will be exposed cost of materials and expenses related to cabinet making/wood working and will practice effective communication with customers to develop customer project designs and customer acceptance of projects. Shop and equipment safe practices is expected at all times. Students will practice skills essential to the cabinet making industry including: math, communication, practical work place competency, customer relations, and entrepreneurship.

## **Residential/Building Construction Level I - Open to 9, 10, 11**

Requirement filled: Elective  
Prerequisite: None  
Content: Students will be exposed to basic elements of home building via construction of a scale model house. Students will learn safe practices, the basics of blue print reading, house layout, foundations, and construction of floors, walls, doorways and window openings, wall sheathing, and roofs and will have a work experience as part of a construction crew. Students will be exposed to property tax basics. Students will practice basic measuring, math, and communication skills.

## **Residential/Building Construction Level II – Open to 10, 11, 12**

Requirement filled: Elective  
Prerequisite: Residential/Building Construction I; must have passed with a B or better  
Content: Students will practice safety while learning building techniques by participating in full size layout and construction of walls and ceilings and will participate in actual wiring, hanging of doors, placing windows, and drywall hanging and taping. The course will also work with competencies such as customer needs, design functionality, costing of materials and labor, working as an employee vs. as a contractor. This is very much a hands-on course.

## **Residential/Building Construction Level III – Open to 11, 12 (May be a 2 period class)**

Requirement filled: Elective  
Prerequisite: Residential/Building Construction II passed with a B or better  
Content: This is a residential construction cap-stone course and will deal in-depth with occupation and career experiences in residential or similar construction including planning and zoning, permitting required for residential construction, licensing, homeowner needs and wants, construction finance from both a business perspective and a homeowner financing/mortgage perspective, and government items such as taxation, residential code requirements, and safety organizations such as OSHA. This is a real life practical application of skills type of class.

## Year 1

### Automotive Technology Level 1 Electrical – 1 Trimester

Worth 6 Transferrable Dual Credits from the College of Eastern Idaho.

This course is required to move on to Year 2 of automotive. You must pass with a 75% or better.



## Year 2

### Automotive Technology Level 2 Engine Repair – 1 Trimester

\*worth 3 transferrable credits

### Automotive Technology Level 2 Brakes, Steering, & Suspension 1 Trimester

### Automotive Technology Level 2 Transmissions & Drivetrains 1 Trimester

\*worth 2 transferrable credits

At least 2 of the 3 courses listed above are required to move on to Year 3 of automotive. You must pass both with a 75% or better.

\*These are dual credits offered by the College of Eastern Idaho.



## Year 3

### Automotive Technology Level 3 Engine Performance 1 Trimester

### Automotive Technology Level 3 Air Conditioning & Advanced Engine Performance 1 Trimester

\*worth 2 transferrable credits

The 2 courses listed above are required to take the hands-on automotive lab 3<sup>rd</sup> trimester. You must pass both with a 75% or better.

\*These are dual credits offered by the College of Eastern Idaho.



## Year 3 Lab

### Automotive Technology Level 3 Diagnostics & Repair Lab 1 Trimester

## Additional Automotive Course

### Automotive Technology Automotive Maintenance 1 Trimester

You are encouraged to take this class in Year 1, but it can be taken at anytime by anyone as a stand-alone class.

## Junior and Senior Math

### Automotive Applied Mathematics 2 Trimesters

Worth 2 Transferrable Dual Credits from the College of Eastern Idaho.

This is a math class offered to any junior or senior who has already completed Geometry and Algebra 2. This class will count for your junior or senior math credits.

## Dual Credit Information

If you take and pass all 5 of the courses listed below and pass their final exams, you will have completed the 1<sup>st</sup> semester of automotive at the College of Eastern Idaho.

- Auto 1 Electrical
- Auto 2 Engine Repair
- Auto 2 Transmissions
- Auto 3 Air Conditioning
- Automotive Math



# **AUTOMOTIVE TECHNOLOGY**

## **\*Automotive Technology I Electrical - Open to 10,11 6 CEI cr**

Requirement filled: Elective  
Prerequisite: None  
Content: Course covers Ohms Law, reading and writing diagrams, building, testing, and repairing circuits, diagnosing and repairing battery, starting and charging systems, and diagnosing motor and lighting circuits. Students must pass with a 75% in both the class and on the final to receive college credits. Students not on the Auto Pathway can take this as a stand alone class.

## **Automotive Technology I Maintenance- Open to 10,11**

Requirement filled: Elective  
Prerequisite: None  
Content: Course covers Students who want to know how to perform maintenance to their vehicles. Course will cover oil changes, fluid flushes, tire repairs, and general service and vehicle inspections. Students who pass this course will have the knowledge required to get a job at a lube shop or tire store. This can be offered as a stand alone course.

## **\*Automotive Technology II Engine Repair - Open to 10, 11 3 CEI cr**

Requirement filled: Elective  
Prerequisite: Pass Electrical class with 75% or better (see above chart)  
Content: Course covers the aspects of engine repair work which includes engine removal, installation, testing, diagnosis, engine measuring, and rebuild. Students must pass with a 75% in both the class and on the final to receive college credits. Students must pass 2 of the 3 courses in Auto II to remain in the Auto program.

## **Automotive Technology II Breaks, Steering, Suspension - Open to 10,11**

Requirement filled: Elective  
Prerequisite: Pass Electrical class with 75% or better (see above chart)  
Content: Course covers all maintenance and repair procedures for disc and drum brakes including anti-lock braking and modern electrical braking systems. Course will also cover steering system service and repair, alignments and suspension service. Students must pass 2 of the 3 courses in Auto II to remain in the Auto program.

## **\*Automotive Technology II Transmission and Drive-trains - Open to 10,11 2 CEI cr**

Requirement filled: Elective  
Prerequisite: Pass Electrical class with 75% or better (see above chart)  
Content: Course will cover the theory and operation of clutches, manual transmissions, transfer cases, differentials, drive-lines and axles, and automatic transmissions. Students will remove, rebuild and replace these units in car and truck applications. Students must pass with a 75% in both the class and on the final to receive college credits.

**\*Automotive Technology II Engine Performance - Open to 11 .....2 CEI cr**

Requirement filled: Elective  
Prerequisite: Complete 1 Auto I course (see above chart)  
Content: Course covers procedures for testing and diagnosing engine performance related issues including no starts, rough idles, lack of power, misfiring, check engine lights, and general drivability complaints. Students will use some of the most advanced testing equipment in the industry. Students will leave with a good understanding of several types of scan tools, multimeters and oscilloscopes. Students must pass with a 75% in both the class and on the final to receive college credits.

**\*Automotive Technology II Air Conditioning, Adv Engine Performance - Open to 11 2 CEI cr**

Requirement filled: Elective  
Prerequisite: Complete 2 Auto I courses (see above chart)  
Content: Course will cover Air conditioning systems theory and operation, learn how to safely diagnose and repair components using up to date equipment. They will also cover advanced engine performance including more in-depth usage of the oscilloscopes, data logging, noise vibration, and harshness testing and vehicle tuning. Students must pass with a 75% in both the class and on the final to receive college credits.

**Automotive Technology III Diagnostics and Repair Lab- Open to 11,12**

Requirement filled: Elective  
Prerequisite: Complete 1 Auto II course (see above chart)  
Content: Students will get real life experience in dealing with customers, completing repair orders and estimates, diagnosing automotive systems, and performing needed maintenance and repairs. This course is designed to give students the skills and confidence they need to gain employment in the automotive industry.

## ***MISC ELE/NON CREDIT COURSES***

# MISC CREDITS

## DRIVERS EDUCATION – 0.5 credit Open to 9,10,11,12

Requirement filled: Idaho Drivers Education Course to receive an Idaho drivers permit/ drivers license.

Fee:

Prerequisite: Students must be 14. 5 years old to be eligible to sign up for the course. Obtain a VOC (through main office), a drivers permit (through DMV).

Content:

## NON-CREDIT CLASSES RELEASE TIME

### Release Time A, B – Open to 9, 10, 11, 12 *Repeatable course*

Requirement filled: None  
Prerequisite: Students must register with seminary first. Seminary sends High School a list of students who have registered and then will be able to put Release Time in their schedule.  
Content: Seminary studies offered through The Church of Jesus Christ of Latter Day Saints

### Release Time Impact Ministry– Open to 9, 10, 11, 12 1st and 2nd tri only *Repeatable course*

Requirement filled: Parent Signature and students must have all graduation requirements in their schedules.  
Prerequisite: Impact Ministry Christian Release Time is available to students with a curiosity about the Bible and a desire to dig deeper in their personal relationship with God. Each student will agree to engage and participate in a manner consistent with respect and consideration for one another. Impact is held at the Crown of Life Church classroom. Students are responsible for their own transportation ie; walk/drive .4 miles away  
Content:

### School Release/Work Release)– Open to 12 *Repeatable course*

Requirement filled: None /passed career exploration to receive credit for this course  
Prerequisite: Parent Signature and students must have all graduation requirements in their schedules  
Content: Official parent release time program, or for special situations required by parent.

### Completed Requirements – Open to 12 *Repeatable course*

Requirement filled: None  
Prerequisite: Parent Signature and students must have all graduation requirements in their schedules. Students must complete their senior project during the second trimester  
Content: This course is listed on students' schedules IF they've completed all of their graduation requirements within the first two trimesters of their senior year.

# **DUAL ENROLLMENT**

**Courses listed with descriptions in their respective section throughout the catalog.  
College of Southern Idaho(CSI)**

Rigby High School students may simultaneously obtain their high school diploma and an Associate of Arts in General Studies. Students wanting to achieve this high level of education must complete 60 college credits. It is extremely important that you meet with your counselor before making the decision to pursue your associates while in high school.

## **Early College Programs**

Early College programs offer academic enrichment opportunities for qualified high school students. Students may earn college credit, along with high school credit while continuing their other courses and activities. Earning college credit while in high school can accelerate a student's degree completion and help students adapt early to the rigor of college level study.

Dual credit registration means an official college transcript is being created with a college grade assigned for each course. College-level courses require extra effort and personal responsibility. Students are advised to study for two-three hours outside class for every hour in class. Dual credit students are responsible to withdraw by the established deadline if they transfer out of a class for which they have registered.

**Dual credit courses are \$75 per credit. Courses must be registered for at both the high school and college level by the college imposed deadline to earn credit. It is the student's responsibility to fully register for these classes. Failure to do so may result in loss of credit at both the high school and college level as well as the possibility of collegiate scholarship removal once the student graduates from high school.**

## **DISCLAIMER:**

**All dual enrollment courses will transfer within Idaho, though they may only be accepted as electives depending on the school your students chooses.**

**Please check how your credits will transfer at [www.coursetransfer.idaho.gov](http://www.coursetransfer.idaho.gov)**

**Associates of Arts (AA) and Associate of Science (AS) @ Rigby High School \*Updated June 1, 2023**  
**Through The College of Southern Idaho (C.S.I.)**

**Student Name:** \_\_\_\_\_ **Student ID:** \_\_\_\_\_ **Email:** \_\_\_\_\_

This sheet reflects Dual Credit Courses taught at RHS only. Students can complete their entire Associates Degree at RHS.

**More courses are available at [CSI.dualenroll.com](http://CSI.dualenroll.com)**

(Any core course credits taken above the required amount will count as an elective credit towards your associates)

**CORE COURSES ALL @ RIGBY HIGH SCHOOL**

**ELECTIVE DUAL CREDIT COURSES ALL @ RIGBY HIGH SCHOOL**

College Credits				College Credits			
<b>ORAL COMMUNICATION</b>				<b>ELECTIVES</b>			
			3 cr				24 Cr
	COMM 101	Fund of Oral Comm (1 Tri)	CWI 3		ALLH100	Fund of Health Professions (1 Tri)	CEI 2
<b>WRITTEN COMMUNICATION</b>					ALLH101	Medical Terminology (1 Tri)	CEI 2
			6 cr		BUSA 101	Intro to Business (1 Tri)	CWI 3
	ENGL 101	Writing & Rhetoric I (1 Tri)	CSI 3		BUSA 215	Science & Data Manage (1 Tri)	CSI 3
	ENGL 102	Writing & Rhetoric (1 Tri)	CSI 3		ED 201	Foundations of ED (1 Tri)	CSI 3
<b>MATHEMATICS</b>					ED 202	Field Experience (1 Tri)	CSI 1
			3 cr		ED 204	Families & Culture (1 Tri)	CSI 3
	MATH 123	Math in Modern Society (2 Tri)	CSI 3		ED 205	Develop & Indiv Diff (1 Tri)	CSI 3
	MATH 143	College Algebra A&B (2 Tri)	CSI 3		ED 215	Educational Technology (1 Tri)	CSI 3
	MATH 144	Trigonometry (1 Tri)	CSI 2		ED 290	Exit Seminar (1 Tri)	CSI 1
	MATH 1153	Statistical Methods A&B (2 Tri)	ISU 3		EXHA 104	Stay Active Live Well (1 Tri)	CWI 1
	MATH 1170	Calculus 1 A,B,C (3 Tri)	ISU 4		FIN 102	Personal Finance (1 Tri)	CWI 3
<b>SCIENCE</b>					HCT140	Certified Nursing Training (2Hr 1 Tri)	CEI 6
			7-8 cr		HPSS 2243	Anatomy & Physiology A&B (2 Tri)	ISU 3
(Must have a course from two different disciplines)					PSYC 140	Career & Personal Success (1 Tri)	CWI 3
<b>LIFE SCIENCE</b>					SPAN 2210	Spanish for Healthcare I (1 Tri)	ISU 3
	BIOL 201/L	Biology 1 (3 Tri) (Combined w/202)	CSI 4		SPAN 2211	Spanish for Healthcare II (1 Tri)	ISU 3
	BIOL 202/L	Biology 2 (3 Tri) (Combined w/201)	CSI 4		CHIN/SPAN	Extra Immersion Classes (Varies)	BSU/ISU TBD
	BIOL 100	Concepts of Biology (1 Tri)	CSI 4		HIST 112	United State History 2 B (1 Tri)	CWI 3
<b>PHYSICAL SCIENCE</b>					ECON 201	Principle MacroEcon ONL (1 Sem)	CSI 3
	CHEM 100	Concepts of Chemistry A&B (2 Tri)	CSI 4		PHIL 101	Intro to Philosophy ONL (1 Sem)	CSI 3
	GEOL 101	Physical Geology (1 Tri)	CSI 4		WELD 107	Safety & Leaders(Ag Weld) (1 Tri)	CSI 2
	GEOL 104	Natural Disasters & Env Geo (1 Tri)	CSI 4		WELD 149	Blueprint R &W (Ag Fab I) (1 Tri)	CSI 2
	PHYS 100/L	Survey of Physics A&B (2 Tri)	CWI 4		WELD 151	Weld Theory (Adv Ag Weld) (1 Tri)	CSI 2
<b>SOCIAL SCIENCE</b>					WELD 154	SMAW Practical (Ag Fab II) (1 Tri)	CSI 4
			6 cr	Electives Needed			24 cr
(Must have a course from two different disciplines)				<b>Please Note:</b>			
	HIST 111	United State History 1 A (1 Tri)	CWI 3	Any core credits taken above 36 credits count as an elective credit.			
	POLS 101	American Nat Govt' A&B (2 Tri)	CWI 3	THE TOTAL CREDIT NUMBER GOAL IS 60			
<b>HUMANITIES</b>				You can register for other CSI ONLINE courses directly on your own:			
			6 cr	<a href="http://CSI.DUALENROLL.COM">More CSI courses online @: CSI.DUALENROLL.COM</a>			
(Must have a course from two different disciplines)				IDLA has more options @: <a href="http://Idahodigitallearning.org">Idahodigitallearning.org</a>			
	ENGL 175	Literature & Ideas (1 Tri)	CSI 3				
	THEA 101	Theatre Apprec. (1 Tri)	ISU 3				
	MUSI 108	Survey of Jazz & Pop Music (1 Tri)	CSI 3				
	CHIN/SPAN	Immersion College Courses (varies)	BSU/ISU 4				
	SPAN 101	Elem Spanish 1 A&B (2 Tri)	CWI 4				
	SPAN 102	Elem Spanish 2 A&B (2 Tri)	CWI 4				
<b>GENERAL EDUCATION</b>							
			3 cr				
	GNED 101	Intro General Ed (1 Tri)	CSI 3				
<b>WELLNESS</b>							
			2-3 cr				
	WELL 255	Well Healthy Living (1 Tri)	CSI 3				

(Core Courses)

Academic Certificate or "Gem Stamp" requirement

**Goal 36**

My Elective Credits Goal =

**Goal 24**

My TOTAL Associate Credits =

**Goal 60**

## College of Southern Idaho Associate Degree/Gem Stamp Important information

- \* 15 of the 60 total credits must be taken from CSI to get the Associates through CSI.
- \* Academic Certificate (also called "GEM STAMP") requires 36 core credits as indicated. By completing the core requirements students generals are complete in all Idaho Colleges ONLY.
- \* YOU ARE RESPONSIBLE TO APPLY FOR CSI GRADUATION. Please pay close attention to dates and deadlines for each specific graduating year.
- \* Associate Degree is First Two Years of College = 60 Credits (36 Core and 24 Electives Credits).
- \* The Associate Degree works for both Associate of Art (AA) and Associate of Science (AS). Please Reference CSI Degrees online for any more specific associate degree information. (Each degree may require specific general education courses in each area.)
- \* Please let your high school counselor know if you sign up for a C.S.I. online class on your own directly.
- \* CSI allows students to register online for any of their dual credit courses. Go to [CSI.DUALENSROLL.COM](http://CSI.DUALENSROLL.COM)
- \* Associate Degrees and Academic Certificate Completers can walk in CSI Graduation in May of Senior Year.
- \* **It is your student's responsibility to follow the outlined associates schedule. If your student deviates from the path, the counselors and CSI advisors cannot guarantee that your student will be able to complete their associate's degree.**

- \* Your student receives funding from the state to cover their associate's degree. If you deviate from this path and take non-associate college courses, you will be forced to pay out of pocket for any college course once your student's funding runs out.
- \* If you complete your entire Associates Degree, the money from the state will not quite cover the entire cost. You receive an approximate \$4,100 from the state but it falls short by about \$500.
- \* Once you run out of Advanced Opportunities money, you will need to fill out a "Certificate of Residency Form" and take it to the county clerk by the designated deadline. This will ensure that the county knows to cover the extra fees that go along with out-of-pocket payments. Colleges will usually send a email with instructions on how to do this, so please check your email regularly.
- \* If you fail a dual credit course the state will turn off funding until you pay and pass another course. Please consider this when registering.

### Typical Associate Degree Course Track @ RHS

<b><u>SOPHOMORES:</u></b>			<b><u>JUNIORS:</u></b>			<b><u>SENIORS:</u></b>		
<b><u>Course</u></b>	<b><u>Credits</u></b>	<b><u>H.S. Credit Met</u></b>	<b><u>Course</u></b>	<b><u>Credits</u></b>	<b><u>H.S. Credit Met</u></b>	<b><u>Course</u></b>	<b><u>Credits</u></b>	<b><u>H.S. Credit Met</u></b>
COMM 101 (1 Tr)	3	Speech	SCIENCE	4	Science	ENG 101 (1 Tr)	3	English 12A
HUMANITY/LANG (1 to 2 Tr)	3 or 4	Humanity	HIST 111 (1 Tr)	3	US History A	ENG 102 (1 Tr)	3	English 12B
WELL 255 (1 Tr)	3	Health	HIST 112 (1 Tr)	3	US History B	POLS 101 (2 Tr)	3	US Government A/B
BIO 201 (3 Tr)	4	Science	MATH 143 (2 Tr)	3	Math	HUMANITY/LANG (1 to 2 Tr)	3 or 4	Humanity
GEN ED 101 (1 Tr)	3	Generals	MATH 144 (1 Tr)	2	Math	ELECTIVES	6	Elective
ELECTIVES	3 or 4	Elective	ELECTIVES	6	Elective			
Year 1 Total =	20		Year 2 Total =	21		Year 3 Total =	19	
						OVERALL TOTAL	60	



## **ADVANCED OPPORTUNITIES – SCHOLARSHIP PROGRAM**

For any questions or to register for these scholarship programs please go to following website. The Career and College advisors would be happy to help as well.

<https://advancedops.sde.idaho.gov/>

**All high school students (beginning in their Sophomore year) are eligible for \$4,125 of scholarship funding to take dual credit and/or overload courses during their high school tenure. In some instances advanced ops funds will not cover all the courses students will take during high school, it is the parents responsibility to cover those access fees.**

**All of the below programs require a student profile be created at the above website and funds be directly requested for each course, which must be approved by the counseling office.**

Students beginning in their sophomore year are eligible to take dual credit classes. The Fast Forward scholarship covers dual credit classes, advanced placement and certain CTE examinations as well as high school credit over load courses. All students will be eligible for \$4,125 in scholarship funding to allow students to take these classes and exams. Students must request funding with the College and Career Counselors to receive the scholarship. Neglecting to request the scholarship money through the portal by the deadline will require students to incur the tuition cost of the class themselves.

The State Department of Education processes the scholarship three times a year, two times during the regular school year and one time during the summer. Colleges and universities will send students bills for these courses prior to the scholarships being processed, please be patient with this processes. It is advised that students contact the colleges and universities directly so that they are aware that Fast Forward funding will cover their bill.

Overload courses are considered those courses that are only for high school credit (not dual credit). Students must be enrolled in 12 Rigby High School credits to be eligible for scholarship funding for overload courses.

In the first month of each trimester, the College and Career Counselor will visit each dual credit classroom to assist students in requesting the scholarship through the Advanced Opportunities portal.

### **EARLY GRADUATION SCHOLARSHIP PROGRAM**

The Early Graduation Scholarship Program enables students who have completed all district and state graduation requirements within 11 full school years or less are eligible to receive a \$1500 scholarship redeemable at all Idaho public institutions. Students must have attended an Idaho public school four full school years immediately prior to graduation. The program is currently open to students who are enrolled in participating districts.



# SENIOR PROJECT

## Due Dates:

Completion of Project Citizen Workbook

Completion of Essay

Completion of Project

- Thesis
- Outline
- Presentation of Projects

Government A

Government A/B

Government B

**Graduation Requirement:** Senior Projects are a graduation requirement for the State of Idaho. Students must complete and pass this project in order to graduate.

**Exhibition:** Students will deliver projects during Government B. Students will present their project, portfolio, [workbook, essay, interviews, all research, maps and any other evidence of learning], with visual aid support.

**Topic:** Choose a problem you would like to see solved, as explained in Project Citizen. Your project could analyze a problem at the school, city, county, state or national level. Choose something that you feel strongly about. When you feel strongly about affecting change, it makes putting a project together easier.

**All topics must be suitable for presentation in school. You must observe all district and school rules in the presentation of this topic. Presentations should be appropriate for school and an educational environment.**

**Length:** Your project should be visual in nature, but will be presented verbally to the class. Your presentation must be a **maximum of 4 minutes, with 3 minutes of follow up questions. Total presentation time cannot exceed 7 minutes.** Your presentation both visual and verbal must be well done. The presentation should have an introduction, body, conclusion, transition and use vivid, appropriate and interesting language. Do not use vulgar or slang forms of language.

**Formatting:** Your project may be in any visual form you would like it to be EXCEPT for a poster. No posters will be accepted as a project. However, nicely done complex display boards are allowed. Handouts may be used in addition to another form of visual support for the project, but will not be accepted as the only visual form of the project. If you have an idea not listed here, please check with your teacher before working on it. These are some ideas and we are open to other formats, as long as they are appropriate for school, **but they must be approved by your teacher first.** This is a formal presentation. It should be professional, clear, well done, argued and articulated.

**FORMAT:** You may use a variety of formats. Below I have listed several that I have seen used in the past, but you are not limited to these formats:

**Power Point, Keynote or Prezi:** add interviews and other noteworthy research information to demonstrate your learning.

**Art Work:** This should be a visual demonstration of the sections of the rubric and what you learned in an artist statement.

**Fabric Art:** quilts, fabric hanging art include an artist statement that demonstrates learning based on the rubric.

**Building:** Models of the city, building a particular piece that shows changes that should be made or two models that are the before and after of the implementation of your project. There should be a statement demonstrating what you learned according to the rubric.

**Music:** original music either played or sang, specifically demonstrating what you learned according the rubric. Student must have a recorded version, as well. Include an artist statement demonstrating what you learned based on the rubric.

**Other:** if you can imagine something else, please make a proposal for approval to your Government teacher.

**Plagiarism:** Do not plagiarize. If you are not sure what that means, please see your teacher. There is extensive information on this subject, including what plagiarism means. If you are caught plagiarizing, **it will result in a no pass on the senior project** and can result in additional measures. Academic honesty and ethics are serious issues and will be dealt with a similar manner.

## Ideas if you are struggling:

- Complete your Project Citizen Handbook
- Seek ideas from your teacher
- **Schedule a conference with your teacher to get help**
- Research different ideas that you would like to see changed
- Think about things that bother you and you wish could be changed

## Senior Project Rubric

Section	Criteria For Evaluation	Rating	Comments
<b>1</b> <b>10 Pts.</b>	<b><u>Understanding of the Problem</u></b> <ul style="list-style-type: none"> <li>States and explains the problem and its causes. Presents evidence that there is a problem.</li> <li>Demonstrates an understanding of issues involved in the problem</li> <li>Demonstrates an understanding of existing or proposed public policies.</li> <li>Explains disagreements about the problem that may exist in the community</li> <li>Explains why government should be involved in the solution.</li> </ul>		
<b>2</b> <b>10 Pts.</b>	<b><u>Analysis of Alternative Policies</u></b> <ul style="list-style-type: none"> <li>Presents two or three alternative public policies to address the problem</li> <li>Explains advantages and disadvantages of each alternative policy presented</li> <li>Identifies controversies and conflicts that may need to be addressed for each alternative.</li> </ul>		
<b>3</b> <b>10 Pts.</b>	<b><u>Public Policy Development and Persuasiveness</u></b> <ul style="list-style-type: none"> <li>States a public policy that addresses the problem and identifies the governmental branch or agency responsible for enacting the proposed public policy</li> <li>Supports their proposed public policy with reason and evidence</li> <li>Identifies and explains advantages and disadvantages of the proposed public policy</li> <li>Explains and supports the reasons why the proposed public policy</li> </ul>		
<b>4</b> <b>10 Pts.</b>	<b><u>Implementation of an Action</u></b> <ul style="list-style-type: none"> <li>Identifies individuals and groups, both supporters and opponents, who will need to be influenced</li> <li>Identifies government officials, both supporters and opponents, who will need to be influenced</li> <li>Outlines and explains an action plan for getting the proposed public policy enacted</li> <li>Proposes action that builds and expands on any previous</li> </ul>		
<b>5</b> <b>10 Pts.</b>	<b><u>Feasibility of Plan Implementation</u></b> <ul style="list-style-type: none"> <li>Plan is original and fully evaluates problem</li> <li>Plan is feasible and could be implemented by the appropriate agency.</li> <li>Solution is realistic and feasible. Plan is implementable</li> <li>Student provides details of implementation</li> </ul>		
<b>6</b> <b>10 Pts.</b>	<b><u>Public Speaking</u></b> <ul style="list-style-type: none"> <li>Student maintains eye contact at all times</li> <li>Student engages audiences and keeps their attention throughout the presentation</li> <li>Student speaks audibly and clearly; is easy to understand and hear.</li> <li>Student's rate of speed is appropriate and language is vivid</li> <li>Presentation is appropriate for an educational and school setting in all ways and at all times</li> <li>Student is not dependent upon notes and has full understanding of the topic</li> </ul>		
<b>Overall</b> <b>40 Pts.</b>	<b><u>Overall Portfolio</u></b> <ul style="list-style-type: none"> <li>Presents material in the display and binder that is mutually supportive</li> <li>Constructs a clear and convincing sequence from one panel or section to the next</li> <li>Uses and documents research from multiple sources and provides appropriate notation for the sources and research evidence used</li> <li>Uses standards of good writing</li> <li>Uses relevant and appropriate graphics and written information</li> <li>Is visually appealing, creative and interesting to the audience</li> <li>Student fully demonstrates that they have an excellent grasp on all issues and components of the presentation and can completely answer questions regarding project and presentation</li> </ul>		

# CREDIT RECOVERY

Only credits earned through retaking a course through Jefferson School District programs, Rigby High School, Jefferson Summer School, or another accredited Online program will replace the failed grade.

## **Rigby Online High School**

**Contact Levi Janes @ LJanes @sd251.org**

## **Idaho Digital Learning Academy (IDLA)**

All IDLA classes that students take for credit recovery will need to be paid for by the student. The current rate for classes is \$90. The fees must be paid to the high school bookkeeper before registration proof of payment should be given at time of registration. These classes typically have time-released assignments, so those students must be vigilant and dedicated for the duration of the class.

## **Jefferson School District Summer School**

All classes taken for credit recovery offered through the school district summer school cost the student \$50 per credit, fee to be paid with the application form. Applications will be available in May, district summer school will be held for the entire month after the regular school year ends. Courses taken through this program will allow for the new grade earned to replace failing grade previously received. Summer School course must be the exact replacement course to replace a failed grade.

## **BYU – Independent Study**

**Rigby will recognize these credits but does not work directly with BYUI to enroll students in these courses, it is the student and parent responsibility.** These courses allow the student an entire year to complete. If a student signs up for a BYU – Independent Study course they must notify the counseling office to have the completed credit added to the students historical grades. **Transcripts must be received from the institution, sent to Rigby High School for the credit to be accepted.**

## **Seniors Remember!**

All credit recovery must be completed on a pre-established date a few weeks before graduation or you will not be able to walk in the ceremony.

# Extra Curricular Activities

## **Clubs/Activities**

### **American Sign Language Club – Open to 9, 10, 11, 12**

Advisor: James Parrish  
Meeting Room: 1615  
Content: Students learn sign language and become immersed in the deaf community. Guest speakers and instructors come in to provide students with the opportunity to become fluent in ASL.

### **Art Club – Open to 9, 10, 11, 12**

Advisor: Michael Feik, Ryan Hancock, Brook Leosch  
Meeting Room: 1705  
Content: All students come who appreciate art and want to improve their skills and understanding.

### **BPA: Business Professionals of America – Open to 9, 10, 11, 12**

Advisor(s): Lori Mecham  
Fee: \$25  
Meeting Room: 2509  
Content: Student lead leadership club that deals with business and the working world. There are regional, state and national competitions in which students can compete in over 90 events.

### **Cyber Patriots – Open to 9, 10, 11, 12**

Advisor: Deryk Barrett  
Meeting Room: 1810  
Content: Team of high school and middle school students who compete in the capacity of newly hired IT professionals tasked with managing the network of a small company. The competition consists of assessing cybersecurity vulnerabilities. These competitions grant students the potential to compete nationally for scholarship funding.

### **Dungeons and Dragons Club - open to 9, 10, 11, 12**

Advisor: CJ West, Jaeda Pappas, Bron Spencer  
Meeting Room: 2603  
Content: The D&D Club hosts after school tabletop role playing game opportunities on a bi-weekly schedule. Join fellow players in creating your own character and setting out on an adventure of swords and sorcery.

### **FCCLA: Family Career and Community Leaders of America – Open to 9, 10, 11, 12**

Advisor(s): Cheryl Lee, Jessica Wahlen, Amber Harris  
Fee: \$25  
Meeting Room: 1704  
Content: Student lead organization that focuses on the multiple roles families in today's society hold, while promoting Family and Consumer Science Education.

### **FHLA: Future Hispanic Leaders of America – Open to 9, 10, 11, 12**

Advisor: Lori Ricks, Allyson Abarca  
Fee: \$25  
Meeting Room: 2602  
Content: Our commitment is to ensure Latino youth succeed in going on beyond high school. We also promote Latino pride and civic engagement.

### **Fuel Up to Play 60 – Open to 9, 10, 11, 12**

Advisor: Jessica Erhardt  
Meeting Room: 1606  
Content: An organization of the National Football League, the United Dairywomen, and school that fund ideas for healthy eating in schools, and being active at least 60 minutes a day.

### **F.O.U.R– Open to 9, 10, 11, 12**

Advisor: Jaeda Pappas  
Meeting Room: 2601  
Content: International student organization dedicated to supporting young people interested in education-related careers. FEA helps students develop the skills and strong leadership traits that are found in high quality educators.

**GSA: Gay Straight Alliance – Open to 9, 10, 11, 12**

Advisor: Juli Stricklan, CJ West  
Meeting Room: 2605 Tuesdays at lunch  
Content: Create harmony at RHS among all students, by encouraging acceptance and safety on campus.

**Hope Squad – Open to 9, 10, 11, 12**

Advisor: Brice Bodily  
Meeting Room: 2605  
Content: Hope Squad is a peer-to-peer suicide prevention program. Hope Squad members are nominated by their classmates as trustworthy peers and trained by advisors. The program reduces youth suicide through education, training, and peer intervention.

**Mountain Bike Club – Open to 9, 10, 11, 12**

Advisor: Fackrell  
Meeting Room: Meetings run May - October  
Content: Opportunity to learn new skills, meet other students who like to bike, compete in races, and provide service through trail maintenance and other projects. Participates as part of the Idaho Falls Composite Interscholastic Mountain Bike Team.

**National FFA Organization – Open to 9, 10, 11, 12**

Advisor(s): Robert Hale, Casey Sanders, Lex Godfrey, Courtney Knickrehm  
Fee: \$25  
Meeting Room: 1801  
Content: FFA makes a positive difference in the lives of students by developing their potential for premier leadership, personal growth and career success through agriculture education.

**NHS: National Honor Society – Open to 11, 12**

Advisor: Melissa Carpenter  
Meeting Room: 1622  
Content: For students in good academic standing who want to serve their school and community.

**Ping Pong Club – Open to 9, 10, 11, 12**

Advisor: Jessica Erhardt  
Meeting Room: TBA  
Content: For students interested in socializing through the activity of playing Ping Pong

**Renaissance – Open to 9, 10, 11, 12**

Advisor: Bryan Lords, Holly Mickelsen  
Meeting Room: No Meetings  
Content: Renaissance is a rewards system to benefit students who have high academic achievement. They need to have a 3.5 GPA or higher, no office referrals and good attendance each trimester.

**E Sports – Open to 9, 10, 11, 12**

Advisor: Hayden Romney  
Meeting Room: 2626  
Content: Play a variety of games from board games, trivia contests and video games. Expert and beginner events occur concurrently during the weekly meetings.

**Rigby Rugby Club – Open to 9, 10, 11, 12**

Advisor: Chet Blasucci  
Meeting Room: Rigby Indoor Soccer Arena / RHS  
Content: Our club is dedicated to teaching young men the values of teamwork, dedication, and service through the sport of rugby! No previous experience needed.

### **Rigby Thespian Troupe 3557 – Open to 9, 10, 11, 12**

Advisor: Jesse Arnold  
Meeting Room: 1145  
Content: Honoring achievement in theatre and enriching their theatre education experience; supporting teachers by providing professional development, networking opportunities, resources and recognition and influencing public opinion that theatre education is essential and builds life skills.

### **Rigby Wranglers (Special Olympics Team) – Open to 9, 10, 11, 12**

Advisor: JoAnn Buyers  
Meeting Room: 1711/1712  
Content: Special Olympics Idaho/Rigby Wranglers offers year-round sports training and competition to children and adults with intellectual disabilities.

### **Robotics Club – Open to 9, 10, 11, 12**

Advisor: Deryk Barrett  
Meeting Room: 1810  
Content: A competitive team that creates robots that participate in 4-5 tournaments per year.

### **Rotary Interact – Open to 9, 10, 11, 12**

Advisor: Bryce Bodily  
Meeting Room: 2604  
Content: Interact is an internationally recognized club that is service based. The bylaws from Rotary International, which support us require that students participate in at least one service project for the school, one for the community and one international project.

### **Scholastic Bowl – Open to 9, 10, 11, 12**

Advisor: Pam Fox  
Meeting Room: 1627  
Content: We compete with other schools answering questions dealing with Math, Science, Literature and History. Preparing for competitions does not start until around November.

### **Science Club/Science Olympiad – Open to 9, 10, 11, 12**

Advisor: Pamela Fox  
Meeting Room: 2615  
Content: Hands-on science tournament where students work as a team to compete in events that consist of events in biology, earth science, chemistry, physics and technology.

### **Sounds of Troy – Open to 9, 10, 11, 12**

Advisor: Corbin Rasmussen  
Meeting Room: 1122  
Content: Student run male acappella group

### **Skills USA – Open to 11, 12**

Advisor: Keegan Hunter  
Meeting Room: 1807  
Content: Participates in automotive competitions, service projects, and activities that promote group unity.

### **\*Technology Student Association – Open to 9, 10, 11, 12**

Advisor: Deryk Barrett  
Meeting Room: 1810  
Content: Fosters personal growth, leadership and opportunities in technology, innovation, design, and engineering. Members apply and integrate science, technology, engineering and mathematics (STEM) concepts through co-curricular activities, competitive events, and related programs.

## **HOW TO CREATE A NEW CLUB**

### **New Club Application Process**

Advisor:	All clubs must have a faculty or staff member appointed club sponsor
Applications:	Applications for approval are available for pick up in the Main Office
Approval:	All clubs must be school board approved. Once the club application has been submitted to the principal for initial approval, the principal will submit the application for final approval.

## CLASS CHOICE COURSE REQUESTS

All high school students request what courses they are going to take the following year during the third trimester. The master schedule for the next school year is built off these requests, which can make schedule changes extremely difficult. It is important that students and their families take great care in determining and requesting their courses for the following year.

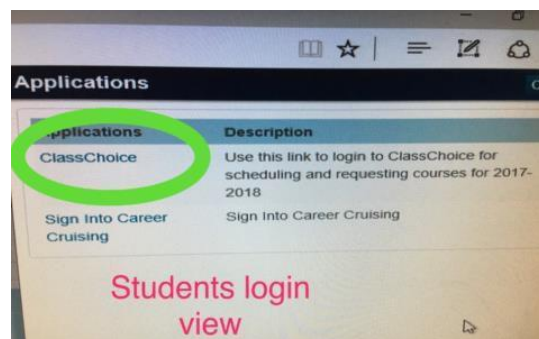
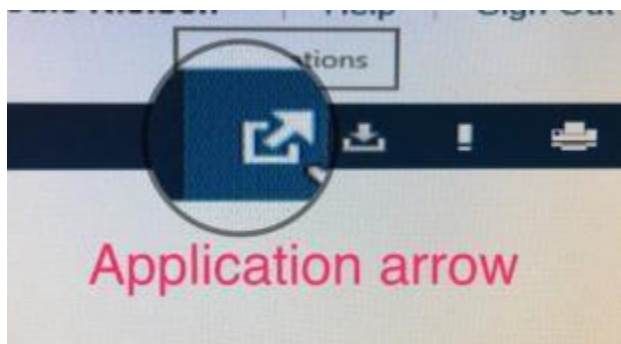
Students who transfer in from different districts may have difficulty requesting certain classes as the pre-requisites courses were not met at Rigby High School. Please consult your counselor for assistance so that we can guarantee correct placement.

### Accessing ClassChoice

Students must be logged into their PowerSchool account to gain access to the ClassChoice application.

The image shows the PowerSchool login page. At the top is the PowerSchool logo. Below it, the text "Student and Parent Sign In" is circled in red. Underneath are two buttons: "Sign In" and "Create Account". There are input fields for "Username" and "Password". A link "Forgot Username or Password?" is located below the password field. A "Sign In" button is in the bottom right corner.

Look in the right hand corner for the Application Icon and choose the top option "ClassChoice".



### Requesting Courses through ClassChoice

Please take great care and consideration in deciding which classes you will be requesting for the next school year. These requests are used to build the master schedule and determine when courses are offered what period for the following year.

)



## ClassChoice Menu



Make sure that you are on the Request screen. There are 3 sets of information to utilize on this screen. The requests section on the left hand side allows you to choose your classes and reads as follows.

Requests	
Request by Course Number	
Step: 1 Special	Add Special
Total Special Hours	.00
Step: 2 Core	Add Core
Total Core Hours	.00
Step: 3 Electives	
Total Electives Hours	.00
Total Requested Hours	.00
Step: 4 Alternates	
Total Alternates Hours	.00

### Step 1: Special

This section is for students receiving special education services. If you do not have services or see an add special option, skip this step.

### Step 2: Core

The core classes that you are required to take next year will be listed in this section, please choose from the available options, you will not be able to move on until you have chosen your core classes.

Transfer students: please note that if you transferred to Rigby High School you may have met the pre-requisite for your core classes at your previous school. Please see your counselor for override assistance.

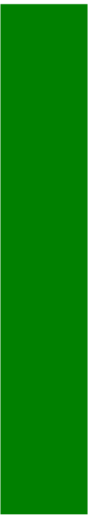
### Step 3: Electives

Once you have requested your required core classes you will be able to choose your elective classes and other graduation requirements that are not mandatory in a specific year of school. Drop down menus based on the course category will show for student ease of choice.

### Step 4 Alternates

Students must choose 3 alternatives in case there is a course conflict in building the schedule. These are classes that you are willing to take.

Summary	
Full Schedule Hours:	15.00
Total Hours Requested:	15.00
No Hours Needed	



The middle toolbar that is extremely useful on the Request screen is the request summary bar. It will be red until you have successfully requested 15 courses. You will only be able to request courses that you are eligible for based on whether or not you meet the following criteria for the course:

- You going to be in a grade level that is eligible for a course
- You have a GPA that is high enough to take a course
- You received a high enough grade in a pre-requisite course
- You have applied to be a Seminary student through their online application
- You have auditioned or applied to be in this course
  - o i.e. Choir, Jazz Band, Automotive, Student Council, Yearbook, etc.

Please note that some advanced courses may not be viewable to request until you have requested a pre-requisite course.

- For example you would like to take Art 1 and Painting in the same year, painting will not be available to request until you have chosen and saved your request for Art1.

Make sure that you get your course requests in as soon as possible, certain classes will have capacities on requests and those who request first will get priority.

Graduation Requirements*	
<b>9th Grade</b>	
English/Language Arts	2.00 needed
Math	2.00 needed
Physical Science	2.00 needed
Humanities	2.00 needed
Multimedia	1.00 needed
<b>10th Grade</b>	
English/Language Arts	2.00 needed
Math	2.00 needed
Lab Science	2.00 needed
Heath	1.00 needed
<b>11th Grade</b>	
English/Language Arts	2.00 needed
Math	2.00 needed
US History	2.00 needed
Lab Science	2.00 needed
Speech	1.00 needed
<b>12th Grade</b>	
English/Language Arts	2.00 needed
Math	2.00 needed
Science	1.00 needed
Physical Education	2.00 needed
Government	2.00 needed
Economics	1.00 needed
Electives	15.00 needed
Required	50.00
Completed	0.00
Needed	50.00

As you go through the course request process this toolbar featured on the far right hand side of the course Request screen will show you your progress in terms of courses you need to graduate.

If the toolbar reads the word “**Needed**” in red next to a number. That indicates that a specified number of that particular credit are still needed to graduate. The example toolbar on the left is what a current incoming freshman would see when they first start their course request process.

As you request classes the graduation requirements will change to the word “**Requested**” in yellow that indicates that the courses you have requested for the following year meet the graduation requirement that the word “requested” is listed next to.

During the school year and as you progress through your high school career and pass your classes the graduation requirements will adjust each trimester to read the word “**Complete**” in green.

If you have taken a course that meets a requirement and is not reflecting that requirement in PowerSchool or ClassChoice please notify the counseling office. Particularly when students have taken online classes or classes from a different institution than Rigby High School that credit may have entered incorrectly and we are happy to remedy the issue.

This toolbar will also be on the right hand side of the “Schedule” screen once the master schedule for the 2018-2019 school year has been built and your student has a schedule. The schedule screen will not be correct until summer.



All course requests are contingent upon the passing of all third trimester classes. Your requests may be subject to administrative change if after the third trimester you did not achieve the grade in a pre-requisite course, earn a high enough GPA, or get a high enough test score required for some dual credit courses. All seminary students must register with Seminary before they will be allowed to request Release Time during the course request period.

Requesting courses, particularly electives does not guarantee a spot. Due to staffing, period that a course is offered, and multiple other variables; a course may have been requested enough to offer, but might conflict with another course your student has chosen. This requesting system allows for optimal scheduling, but unfortunately, it is not perfect. Utilizing ClassChoice will also allow you to change your own schedule should that be necessary.

Starting in the summer following the trimester you made the course requests and at the end of each trimester, ClassChoice will be opened by RHS for schedule changes. Please view the following instructions very carefully. As each student has specific needs these instructions are not going to cover every scenario the counseling office encounters, please however read these instructions first and attempt to change your own schedule before pursuing assistance as these instructions may answer most of the questions you have and issues that you may encounter.

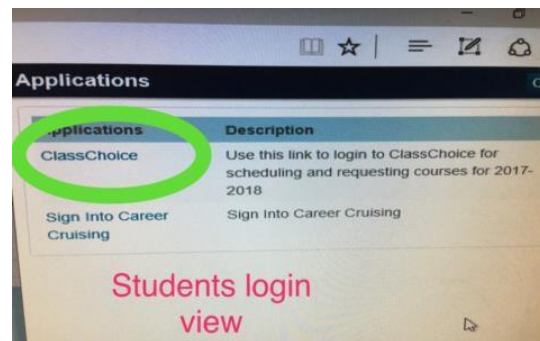
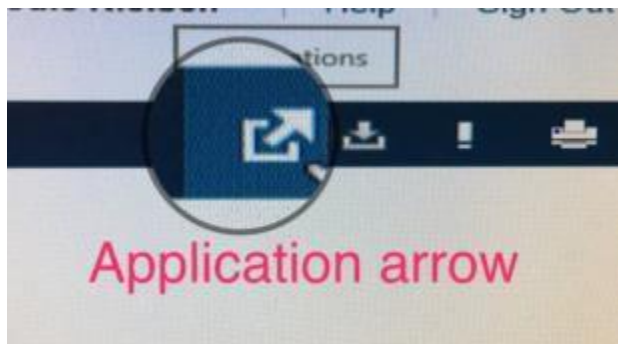
# CLASS CHOICE SCHEDULE CHANGE INSTRUCTIONS

## Accessing ClassChoice

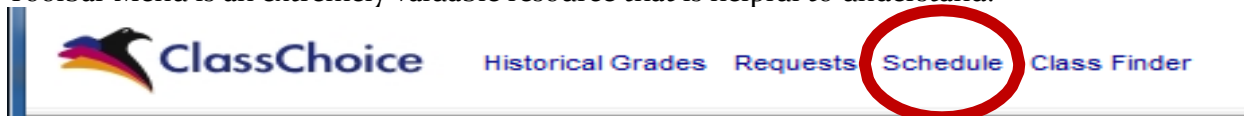
Students must be logged into their PowerSchool account to gain access to the ClassChoice application.

The image shows the PowerSchool login page. At the top is the PowerSchool logo. Below it, the text "Student and Parent Sign In" is circled in red. Underneath are two buttons: "Sign In" and "Create Account". There are input fields for "Username" and "Password". Below these fields is a link that says "Forgot Username or Password?". At the bottom right is a blue "Sign In" button.

Look in the right hand corner for the Application Icon and choose the top option "ClassChoice".



Once you have accessed ClassChoice the Schedule page should be the default, however the Toolbar Menu is an extremely valuable resource that is helpful to understand.



## Historical Grades:

- Your historical grades as they exist in PowerSchool will be listed in this section
- Classes you took over the summer (particularly online) may not be listed, as we have not received the transcript. Please notify the counseling office if they are missing from your historical grades.
- Students who took Algebra in 8<sup>th</sup> grade will have this grade listed, but it is not worth high school credit.

**Requests:** A list of the courses you requested and a note listing whether or not they are in your schedule.

**Schedule:** Once the master schedule for the school year has been solidified, the schedule screen will be the default ClassChoice screen for all students. This is the page where you will be able to change your schedule should it need adjusting.

### **Schedule Change Instructions:**

1. Review Schedule and if Necessary, Make Changes
  - a. To change your schedule click on the “Schedule” menu option
  - b. The first column, labeled “Period” has an “edit” link that will allow you to view what classes are available during that period for each trimester.

Period	Trimester 1	Trimester 2	Trimester 3
0 Edit	Work Based Learning Rm: 310 (Love, Nancy)	Missing Class	Missing Class
1 Edit	Parenting and Child Development 1 Rm: 304 (Griggs, Julie)	Honors Pre Calculus B Rm: 211 (Baldwin, Donnie)	American Government B Rm: 305 (Peterson, Scott)
2 Edit	Missing Class	American Government A Rm: 305 (Peterson, Scott)	Honors Pre Calculus C Rm: 211 (Baldwin, Donnie)

- c. If you are missing a class in periods 1 through 6, please choose a class for that hour. Zero is not a required class period for most students and can remain a “MissingClass”
- d. When the edit schedule window pops up, you will see the below screen.

1. Choose courses from the drop-down menus.  
 2. Please note that if you add a core class (math, English science or history) you may not be able to remove that request once you have saved it so please choose carefully. 3. Please note that if you move a course to a different period you may not be able to change your schedule back. 3. Click SAVE CHANGES to save your course selections.  
 4. You must have a full schedule in all three trimesters.

Modify Schedule: A3

A3 Year 2017-2018 \*\*\* No Class Selected \*\*\*

A3 Trimester 1 Release Time A 7998 Seminary A (RTA, RHS) (2 open)

A3 Trimester 2 \*\*\* No Class Selected \*\*\*

A3 Trimester 3 PHYS 1100: Essentials of Physics B - ISU 5154 B in Algebra II and Physical Science (Prins, Jennifer Chien) (18 open)

Save Changes

Cancel

- Follow the instructions on the screen on how the drop down menu works.
  - o Choose the drop down menu for the period and trimester you want to edit
  - o Please note that if you are trying to move a course you are already scheduled in you will have to drop that course from the place it is currently scheduled in first.
  - o Make sure that there is room in the class you are trying to request. (see Class Finder)
  - o Be careful that if you drop a course by mistake you may not be able to get back in as students may take advantage of the space you created by dropping the course.
    - o Please take the greatest effort in making sure that you have a full schedule, with no missing classes in periods 1 through 6 for all three trimesters.
  - o If you are not seeing a class that you believe you should be eligible for, please speak to the teacher and/or the counseling office to get that issue resolved.

- e. To adjust the hour that you are taking a such as English or Math hover your cursor over the section in which you are currently scheduled. On the Schedule screen, to see what other trimesters and hours that it is offered as well as if there are any available spots.

- Again you will not be able to see the course in the drop down menu unless you have replaced that course with something else.
- For example if you intend to take Track during 6<sup>th</sup> hour when you are scheduled for Seminary, you will have to drop Bootcamp, as you are not allowed to take 2 PE credits during one trimester, but it looks like Seminary is full 3<sup>rd</sup> trimester, 3<sup>rd</sup> hour.
- You will have to look at each course to see it's availability each hour.
- This may take patience as when students drop courses it makes room in sections so you may have to wait a couple days until space in a course during the period you desire it becomes available.

**Class Finder:** This menu allows you to see what classes are offered during a certain period and trimester



- Clicking this button will open a new tab

- You can search by Course and/or Teacher
- Once you have specified what you are looking for the far right column "Open Seats" will show all of the courses that fit your criteria and if there is space.
- Please be aware that due to our IEN arrangement with Utah State University and Idaho State University some dual credit classes may be available for students to choose during the schedule change window that were not available during the course request period. These classes will typically be offered either first or fifth hour and will be advertised during the schedule change window before the trimester that they will be offered.

**Deadlines:** Students must adhere to strict deadlines as they are set by the counseling office.

